

Replacing Filters

Navigate to the Service Panel: Select "Explore" on the dispense screen, then "Service" on the Ingredients screen. Enter the Service PIN Code:1986 to enter the Service Panel.

When the Bevi is in need of a Filter Replacement the Service panel will indicate a RED filter.



It is recommended to use 3M Filter HF20

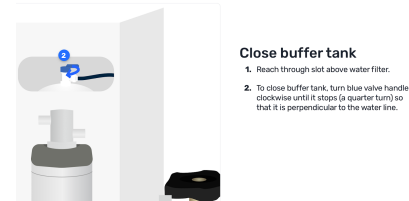
To get started select the Filter, under What are you swapping today?

What are you swapping today?



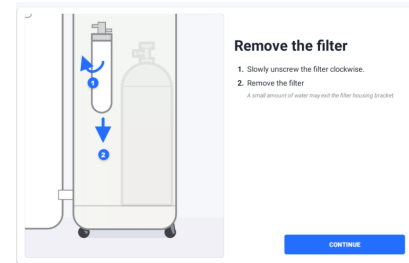
Follow the Filter Wizard Steps:

1. Close the buffer tank by reaching through the slot above the filter and turning the blue valve handle clockwise, a quarter turn.



Click 'Continue'.

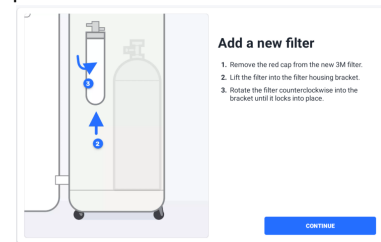
2.Remove the existing filter by unscrewing it clockwise and disposing of the old filter.



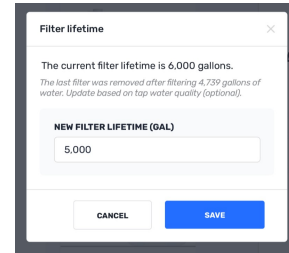
Click 'Continue'.

Locate your new 3M filter and remove the red cap.

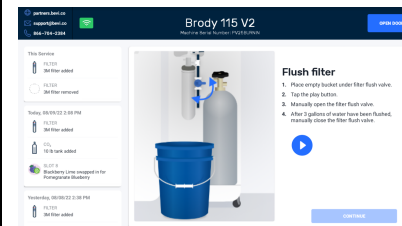
3.Add the new filter by inserting into the filter housing. Rotate counter clockwise until it locks into place.



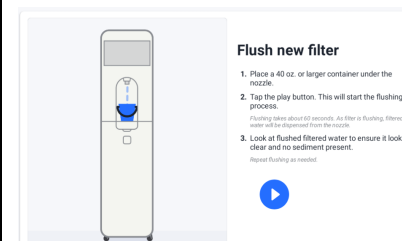
OPTIONAL: Edit the filter lifetime based on local water quality, between 400-10,000 gallons.



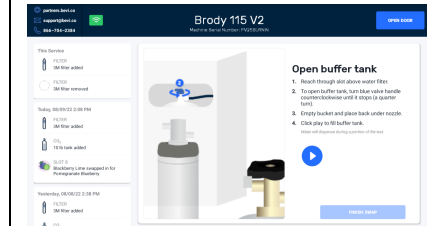
4.Flush the new filter Grab a large container and place it under the FFV, open the blue valve handle, clockwise. Press the play button to time the flush. Once complete, close the blue valve handle, turning counterclockwise.



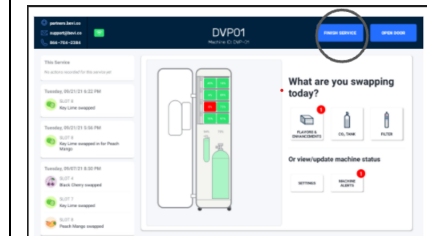
5.Place a bucket under the nozzle and press the play button to flush for 60 seconds. Click "Continue".



6.Open the buffer tank by reaching through the slot above the filter and turning the blue valve handle counterclockwise. Click "Finish Swap".

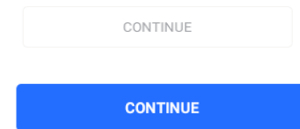


Select "Finish Service" in the service panel to return the machine back to the dispense screen.



NOTE: Filters are NOT included in the initial install package. You can order filters at orders.bevi.co SKU: 901-0002

In many cases the Button will be grayed out until the action is performed. Once completed the wizard will update to allow you to click continue.



Always inspect the water to make sure there is no sediment or cloudiness from the new filter.