

## Troubleshooting CO2 Early Run-Out or Leaks on Bevi Standup 2.0

### Overview

This guide will help you troubleshoot issues with a Bevi Standup 2.0 machine running out of CO2 unexpectedly early. The symptoms associated with this issue include:

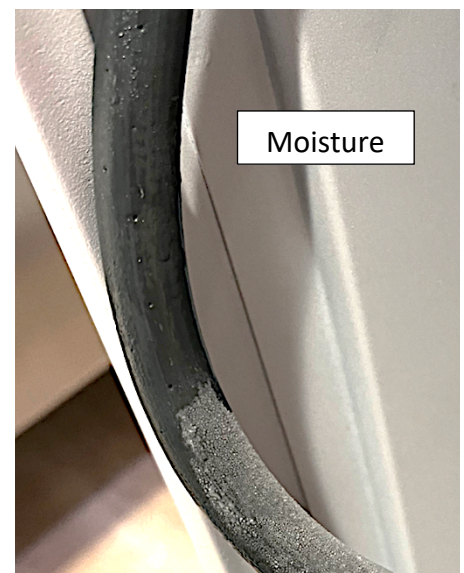
- Sparkling water greys out / reported CO2 runs out much earlier than expected
- A hissing sound from inside the machine

### Required Tools & Materials

- Soapy water solution
- Large wrench (for CO2 tank)

### Task 1: Locate source of the Leak

1. Ensure the system has a full pressure CO2 tank attached and open.
  1. This can be checked in the service panel under 'Troubleshooting Tools'. If the reported CO2 pressure is reporting over 500 psi, there is sufficient pressure.
  2. If the current CO2 tank has been depleted, you must replace with a new full CO2 tank (and open that tank)
2. Look at the flexible high-pressure hose – are there any signs of frost or moisture which



Frost

Moisture

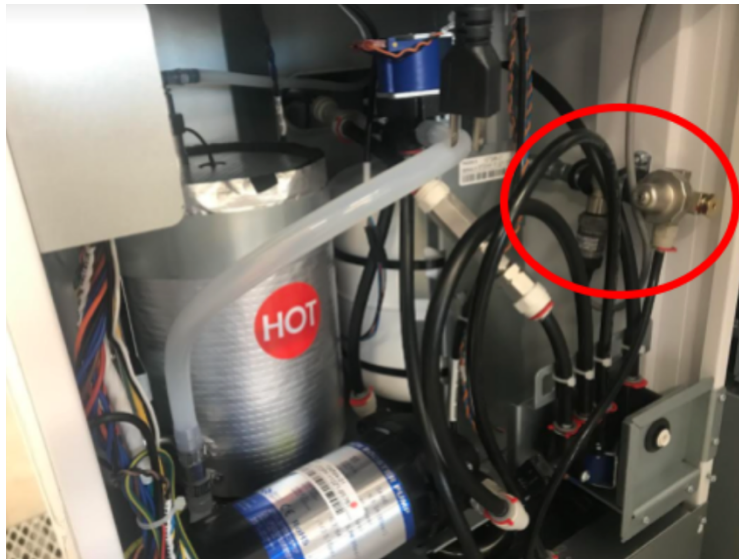
suggest tiny holes allowing CO2 to escape? (if found, the CO2 assembly needs replacement)

3. Using soapy water, spray down all fittings and connections for the CO2 Regulator assembly. Leaks will present with small bubbles coming from the fitting or connection.

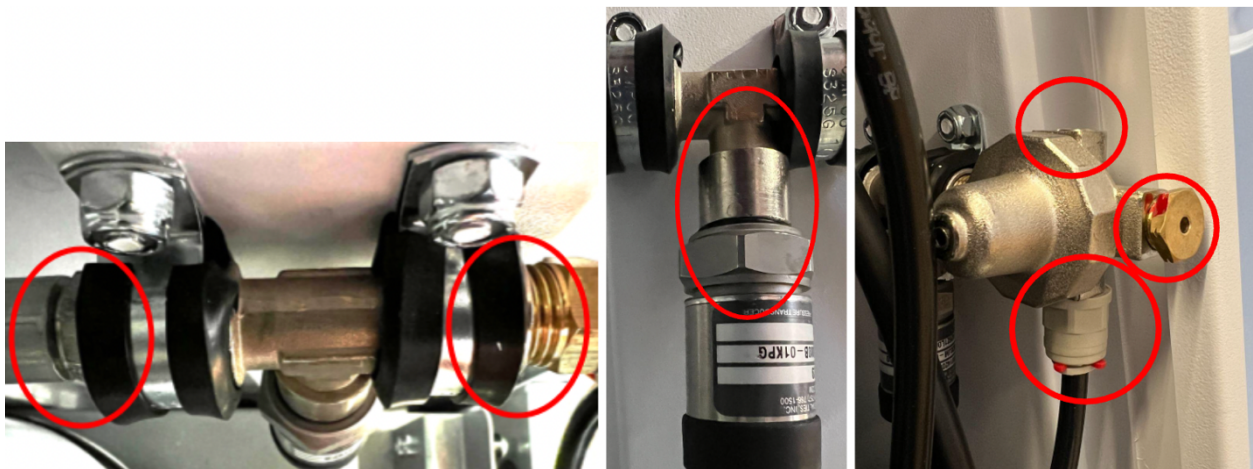
1. Check the high-pressure hose and all connection points at and around the tank:
2. If leaking from the tank connection, recheck that the nut is properly tightened onto the tank AND that the CO2 washer is present.
3. If leaking from any of the other fittings shown below, the high-pressure hose assembly is faulty and should be replaced (see link at end).



4. If no leak is found at the tank, check the CO2 Pressure Sensor and Regulator Assembly for leaks.
  1. Remove the center back panel of the machine.
  2. Locate the CO2 Pressure Sensor and Regulator on the right side wall.



3. Repeat the soapy water test on all connections and fittings:



4. If a leak is found in any of the above highlighted positions, you must replace the entire CO2 Regulator Assembly.

## **Task 2: Replace missing or faulty part**

1. If the system was missing a CO2 washer, replacements can be ordered on [orders.bevi.co](https://orders.bevi.co).
2. If there is a leak anywhere within the CO2 Regulator Assembly, that part must be replaced using [this procedure](#).

**If you have any further questions please feel free to reach out to our support team at [support@bevi.co](mailto:support@bevi.co) or 1-866-704-2384**