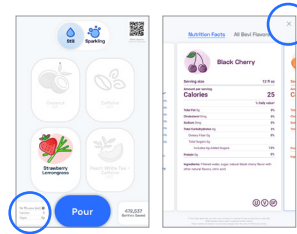


# Swapping Filters in the Stand Up 1.5 [and earlier]



## 1. Access the Service Panel

Tap the Nutrition Facts in the bottom left of the screen. Press and hold the X in the top right, until “Service Panel Loading” appears.



## 2. Locate Filter

Use the key to open the machine door and locate the filter to be replaced according to the Service Panel.



## 3. Remove the old filter

Turn off the water source shut off valve to the machine. Remove the filter by twisting clockwise. Dispose of the old filter.



## 4. Add the new filter

Remove the cap and align the filter into the bracket, twist counterclockwise until the filter locks in place.



ALL new water filters MUST be flushed (at least 3 gallons) BEFORE swapping to avoid carbon particles shedding inside the machine. If not properly flushed, these particles increase the risk of clogged water lines.

## 5. Turn on the water source

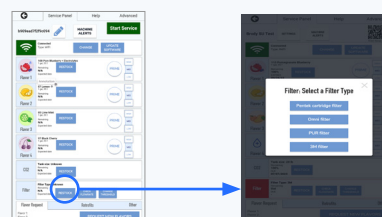
Pressurize the system by turning on the water source valve, and check for leaks.



## 6. Restock Filter in Service Panel

Tap the “Restock” button and complete the fields to ensure proper tracking of inventory. Set filter type and threshold.

Close and lock the door.



Set the filter type and lifespan (threshold) in the service panel.

The 3M filter should be set to 1,500 gallons. The filter life can be adjusted to a custom amount based on your building or town water quality.

## 7. Flush the system

Place a container under the dispense area. Pour a glass of water to ensure the water is clear, without any cloudiness or sediment.

