

---

# [Guide] Bevi Standup V1.5 - New Backflow Preventer Installation

## Overview

This guide will walk through the steps to remove the backflow preventer from a Bevi Standup 2.0, and install an updated version of the backflow preventer.

- *Previous versions of the backflow preventer were non-vented and compliant to ASSE 1032. The updated part includes a vent, and is compliant to ASSE 1022.*
- *The updated backflow preventer is located in the same place as the old part, and should not change the routing or functionality of the water path in the machine.*



## Required Tools & Materials

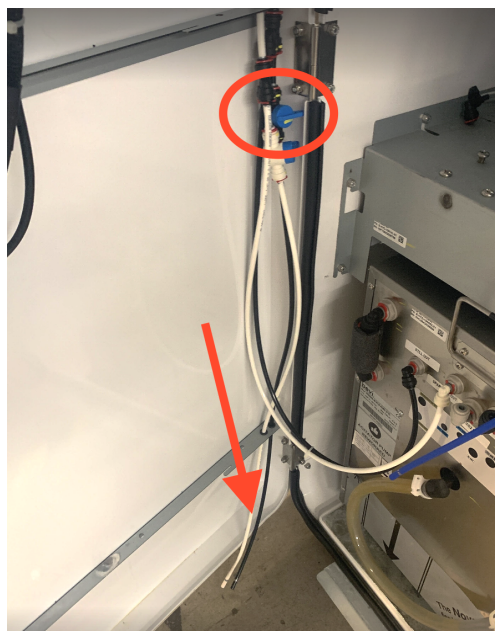
- *New Backflow Preventer (FRU Part Number #720-0253)*
- *Tubing cutters*
- *Zip Ties*
- *Small bucket or container*

## Task 1: Depressurize the water system

1. Locate the shut off for the water supply to the Bevi.
2. Turn off the water supply.
3. Close the buffer tank.
  - The buffer tank is located below the flavor shelves.
  - The shut off valve is on the left side of the tank, behind the CO2 tank.
  - Turn the valve  $\frac{1}{4}$  turn clockwise to close. The valve will be pointed towards the door when closed.



4. Locate the diagnostic lines at the bottom of the door.
  - Pull the black tube out of the grommet and run into a small bucket or container.
  - Open the shut off valve to release the pressure from the line.
  - Once the tube is depressurized, close the valve.



## Task 2: Remove the old backflow preventer

1. Locate the backflow preventer on the plumbing shelf on the water line, just after the filter.

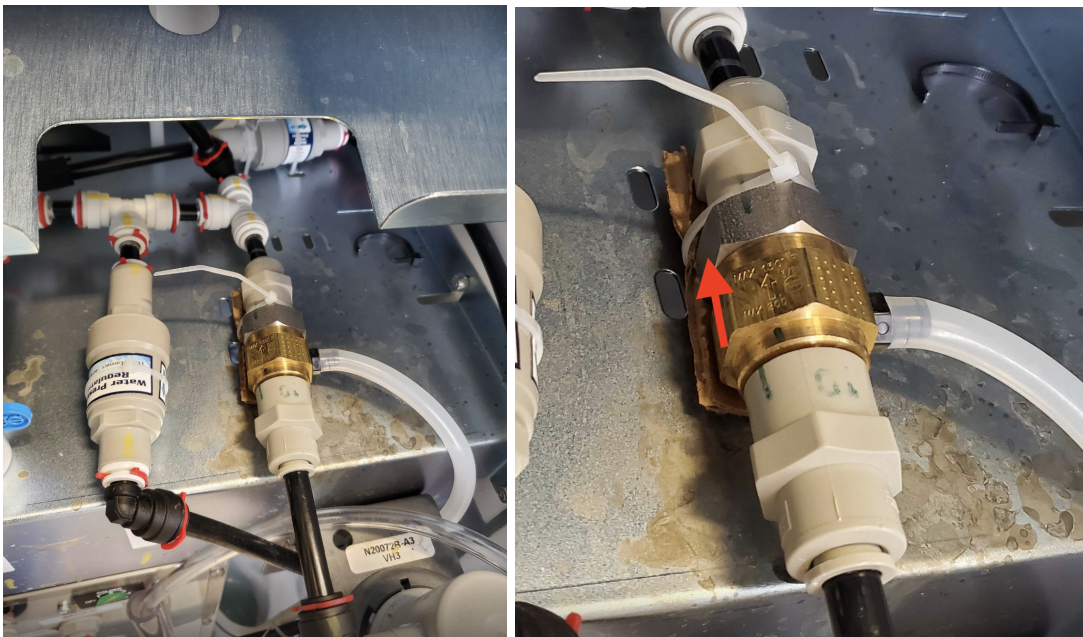


2. Remove the red locking clips from the fittings, and disconnect the  $\frac{3}{8}$ " tubing from the back flow preventer.
  - The old backflow preventer will not be reused. Discard.

## Task 3: Install the new backflow preventer

1. Install the new backflow preventer in the same location as the old part.
  - Reconnect the two  $\frac{3}{8}$ " tubes to the input and output of the backflow preventer.
    - Ensure the tubing is fully seated into the push to connect fittings
    - Reinstall the red locking clips.

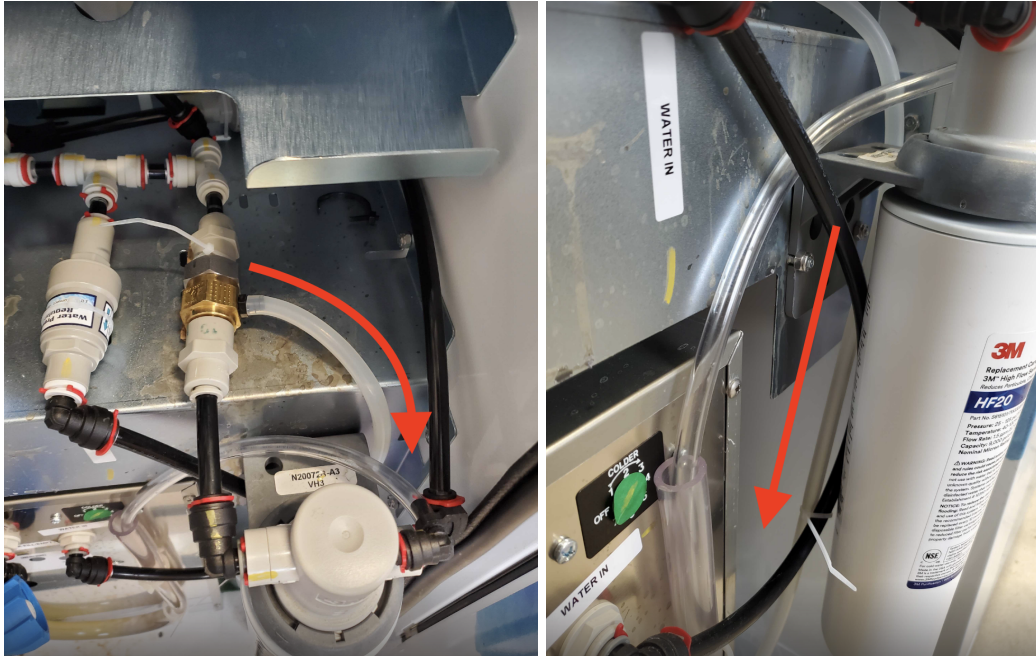
**NOTE: The backflow preventer is directional. There is an arrow indicating the flow direction on the brass fitting in the center of the backflow preventer.**



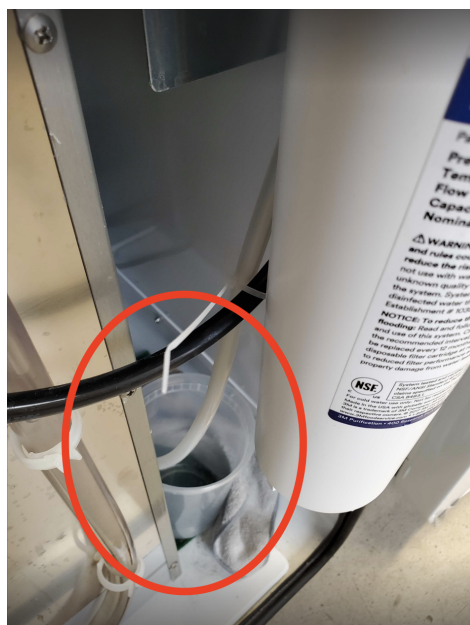


## Task 4: Routing the vent tube

1. The vent tube will route down from the plumbing shelf, and behind the filter.
2. Secure the vent tube to the water-in tube from the filter outlet to the chiller with a zip tie.



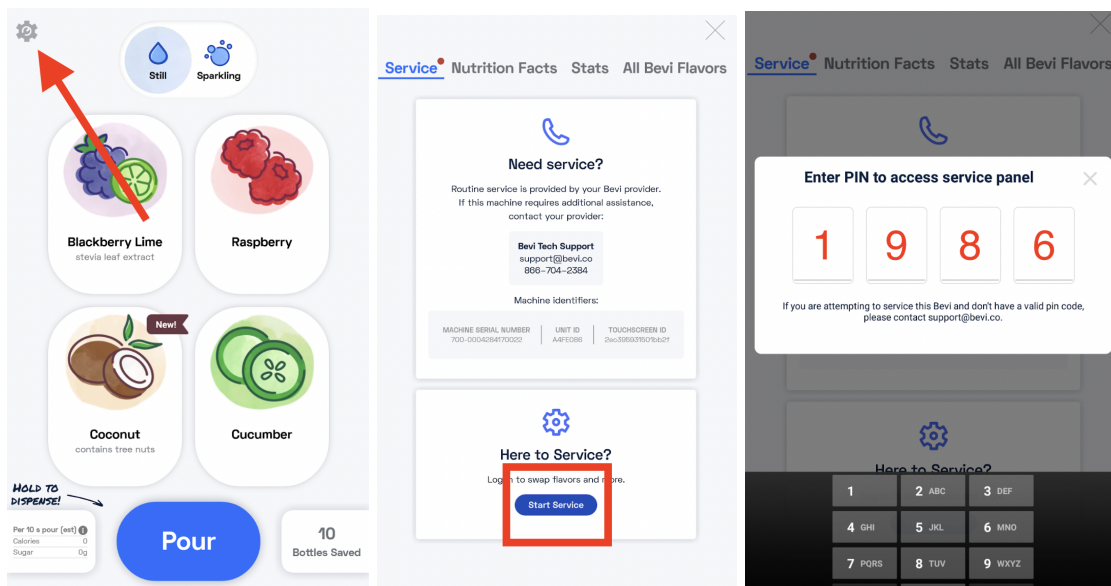
3. Place a small container at the base of the machine behind the filter, beside the carbonator.
  - You can use double sided tape to secure the container in the machine to avoid any spilling.
4. Run the end of the vent tube into the container.



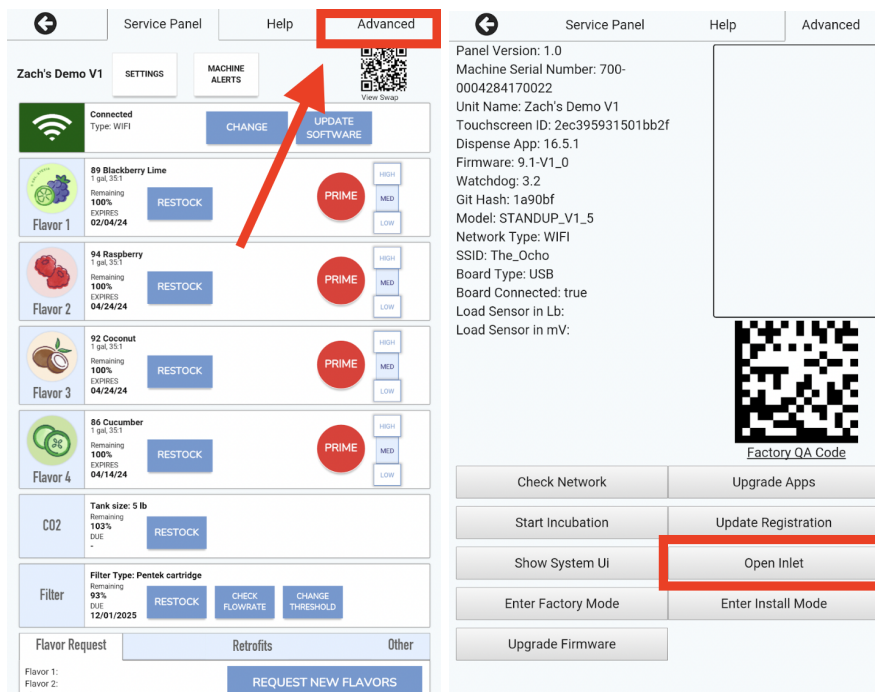


## Task 4: Turn on the water supply

- Once the new backflow preventer has been installed, turn on the water supply to the Bevi.
- Access the service panel on the screen.
  - In the upper left corner, tap the service button (gear/wrench).
  - Tap the blue “Start Service” button.
  - Enter the service PIN “1986”.

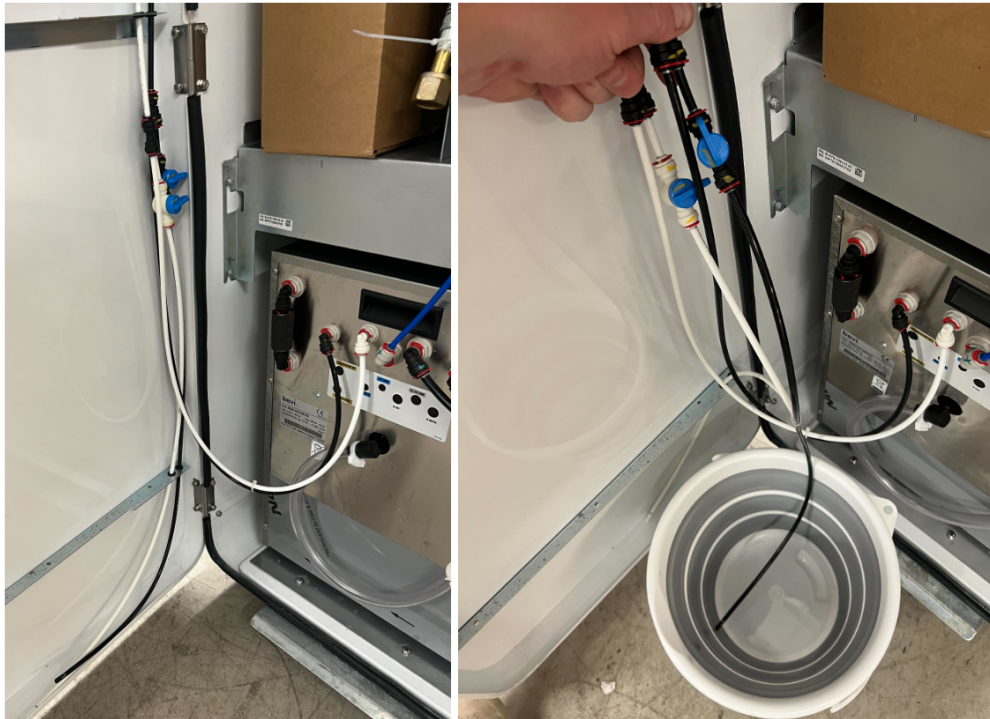


- Open the inlet solenoid
  - Tap “Advanced” at the upper right corner of the service panel screen.
  - Tap “Open Inlet”



4. Flush the water system

- On the inside of the door, locate the still water diagnostic line (black).
- Remove the line from the grommet on the door, and run into a small bucket.
- Open the shut off valve and flush water through the machine to ensure any air introduced into the water system is cleared.



5. Re-open the buffer tank.

- Rotate the buffer tank valve ¼ turn counterclockwise to open the tank.

6. Check all plumbing connections for any leaks.

- If any leaks are present, recheck all tubing connections to ensure they are fully seated in the push to connect fittings.

7. Exit the service panel and test the machine

- Pour both cold and sparkling water to ensure the machine is functioning properly.

8. Close and lock the door.

If you have any questions or need additional assistance, please contact Bevi Support at [support@bevi.co](mailto:support@bevi.co) or 1-866-704-2384