

How to Swap Flavor & Enhancement Boxes

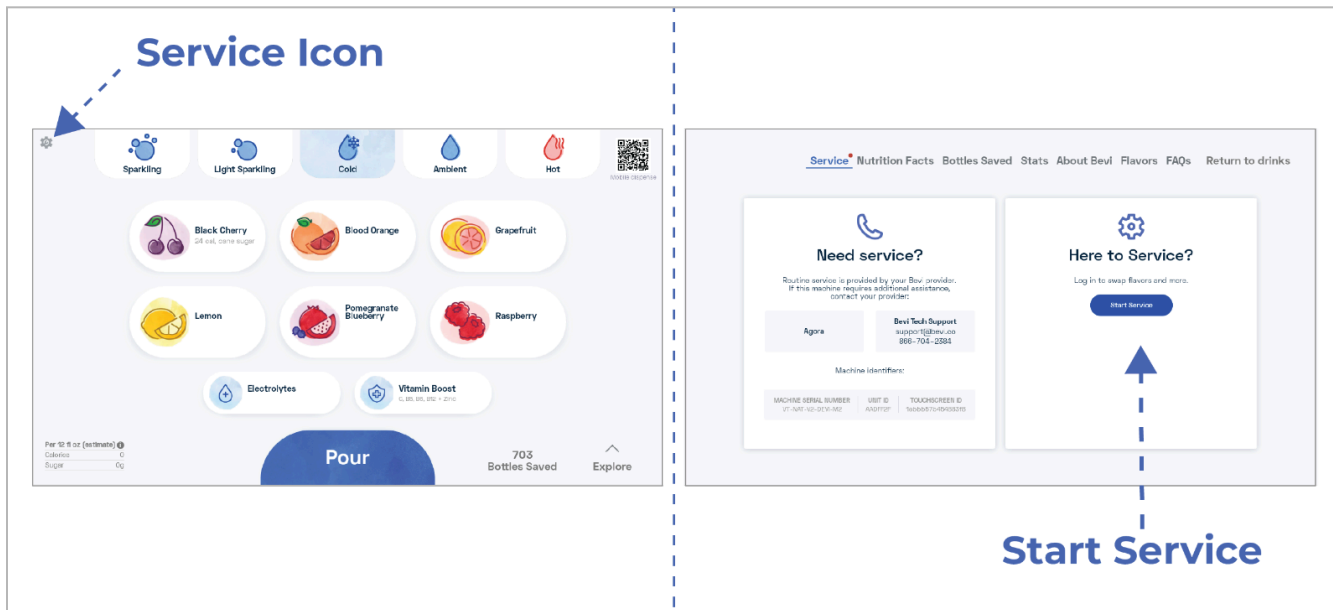
Standup 2.0 Guide



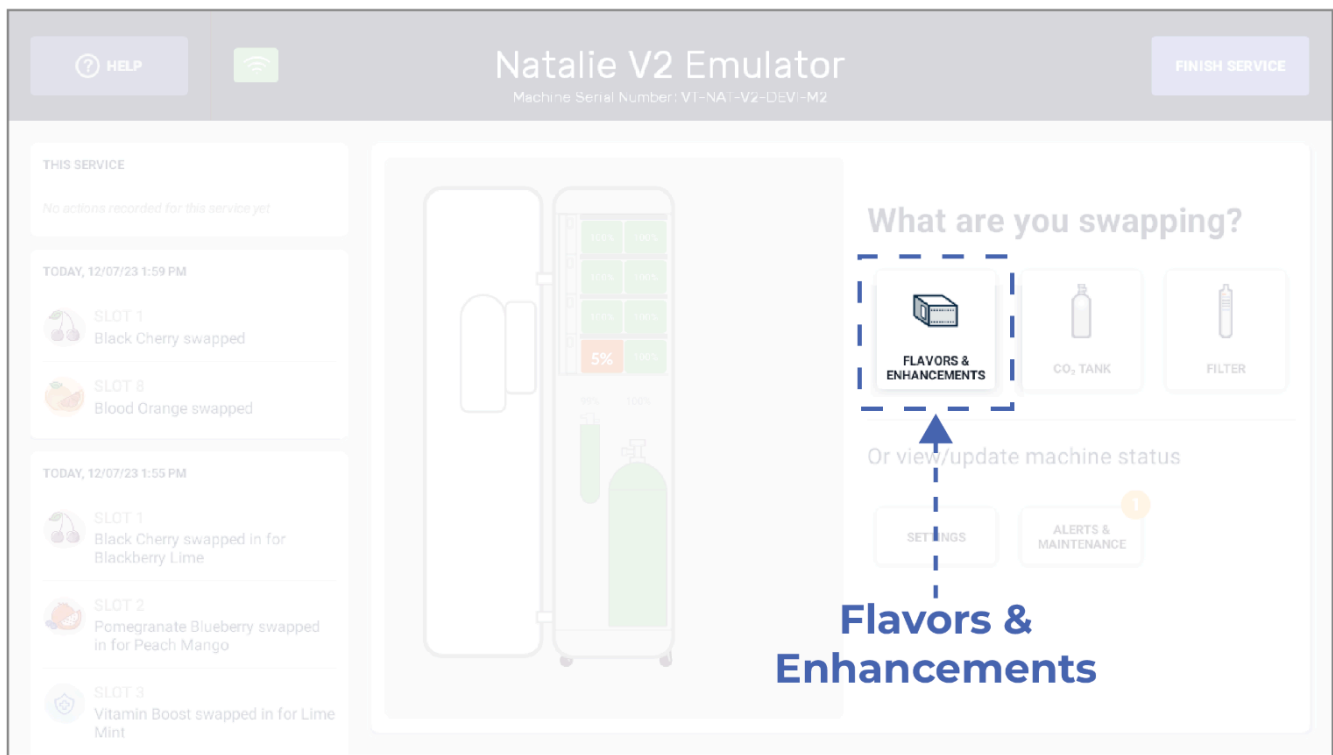
This document will show you how to swap flavors or enhancements in the Standup 2.0

1. Open Service Panel

1. Enter the Service Panel by tapping the Service icon in the top left corner of the dispense screen.
2. Then tap Start Service.



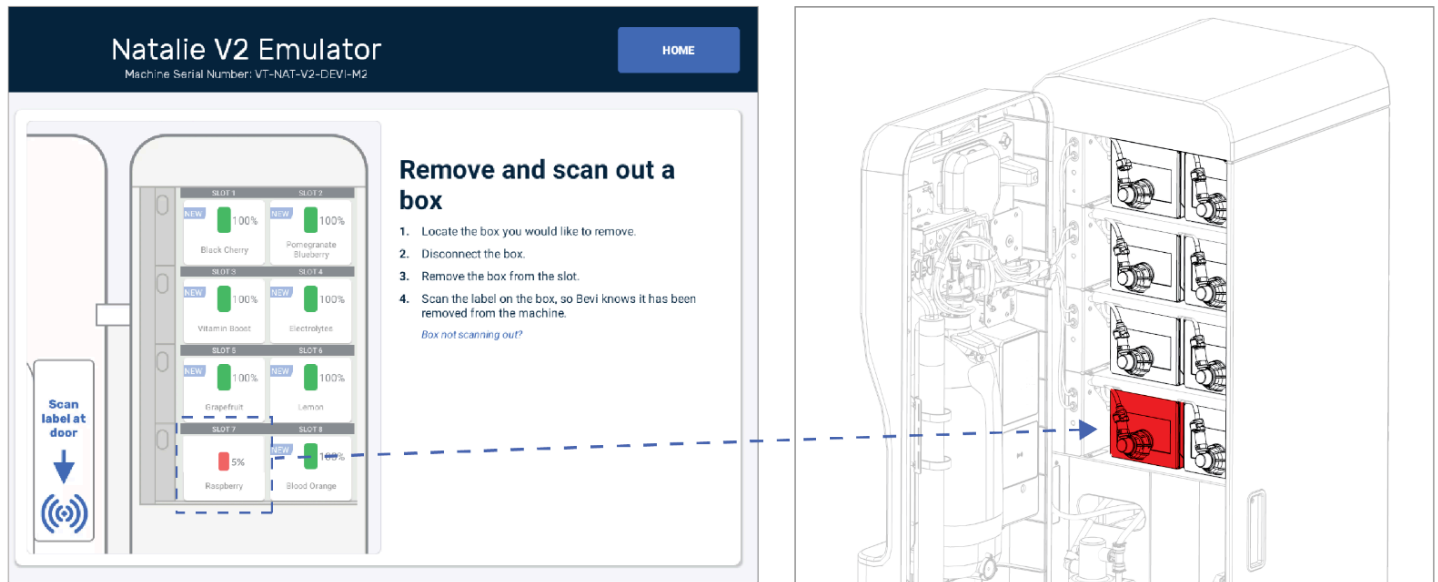
3. Enter PIN **1986** to access the Service Panel.
4. In the Service Panel, tap **Flavors and Enhancements** to see what flavors are out or expired.



2. Open machine door

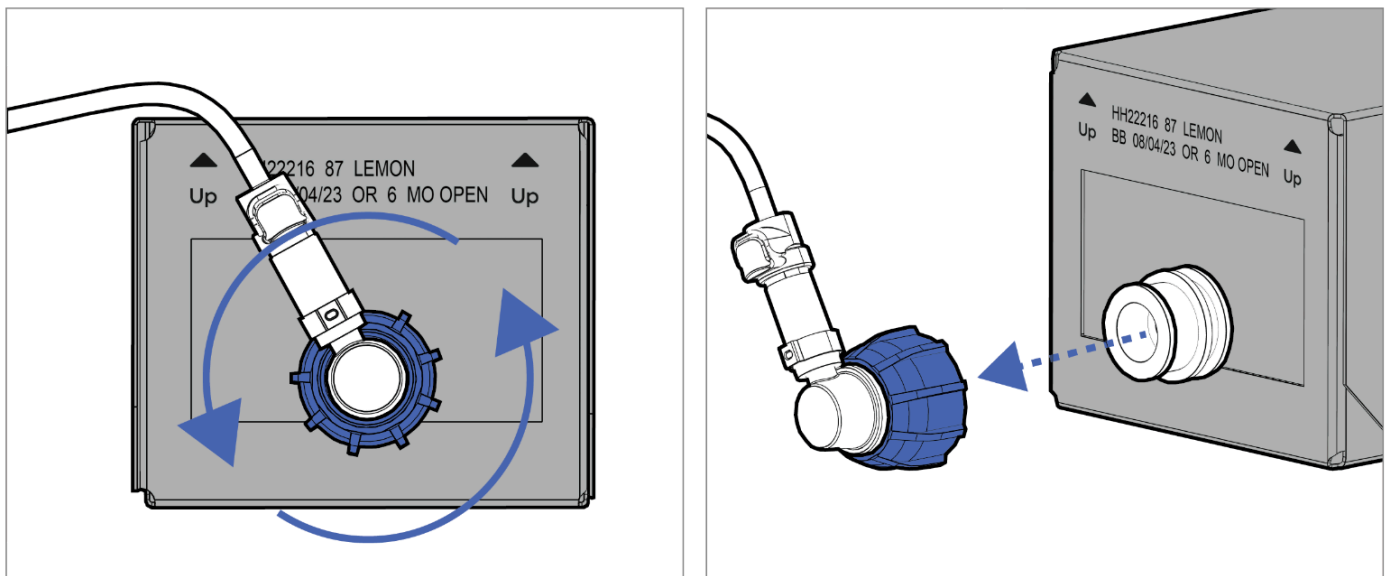
Locate the flavor box that needs to be replaced, as shown in Service Panel.

- Flavors highlighted in RED are either out or expired.



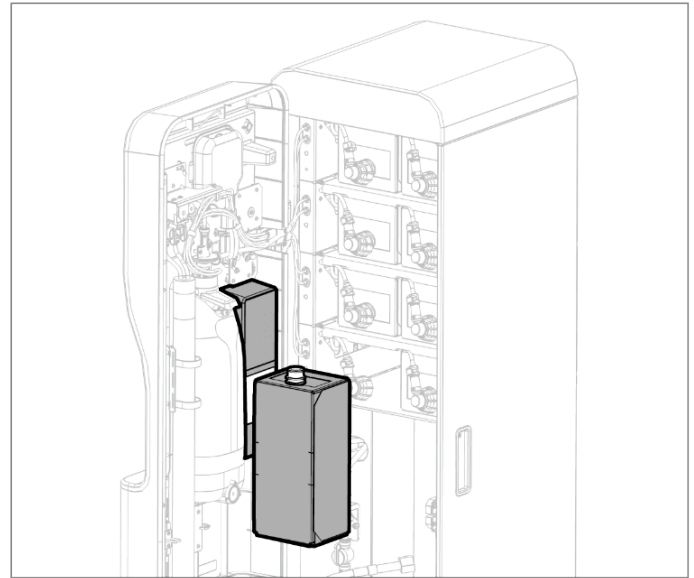
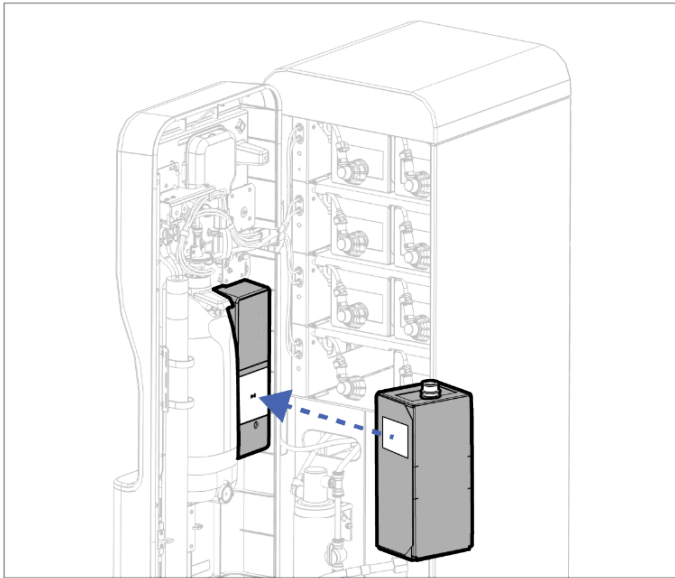
3. Disconnect Box

Disconnect the **blue connector** from the **flavor box** by rotating it counterclockwise until it is free.



4. Scan out Box

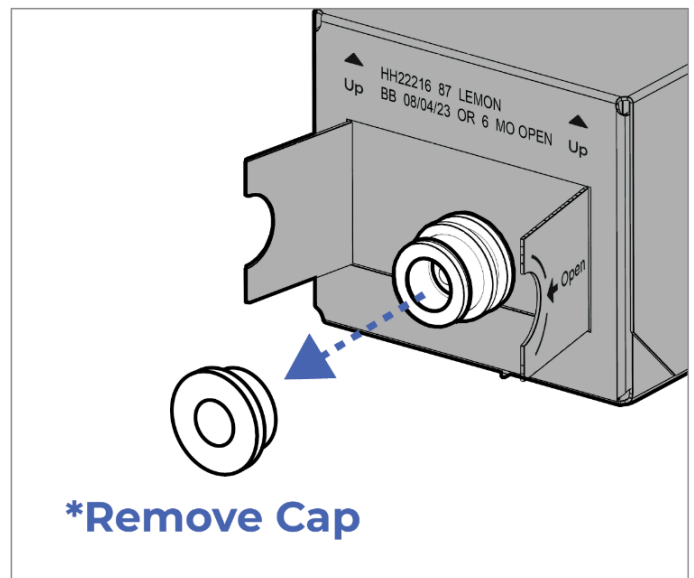
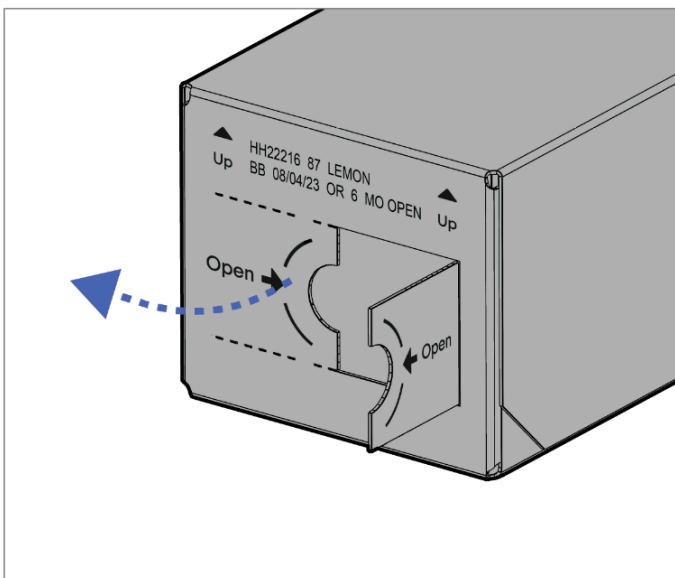
Remove the box from the machine and scan the Label on the Restock Board by holding it up to the scanning area marked on the inside of the door. An audio tone will sound when the label is scanned out successfully.



5. Open new Box

Break open the center perforation on the flavor box, and open the sides.

- Remove the cap and expose the flavor nozzle.

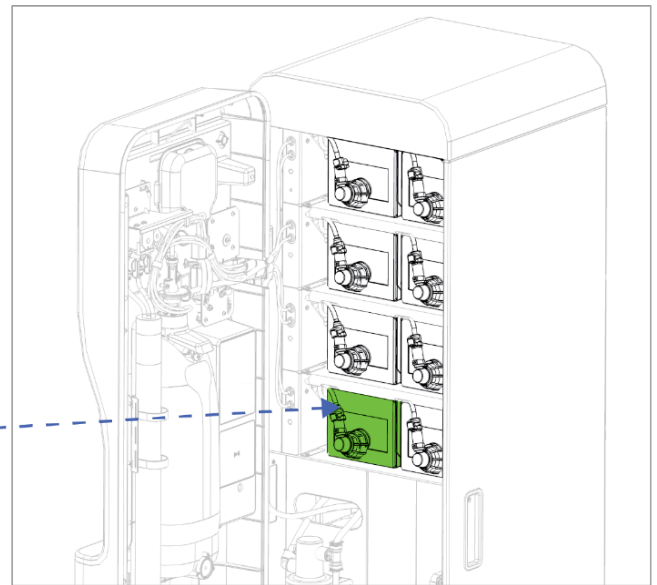
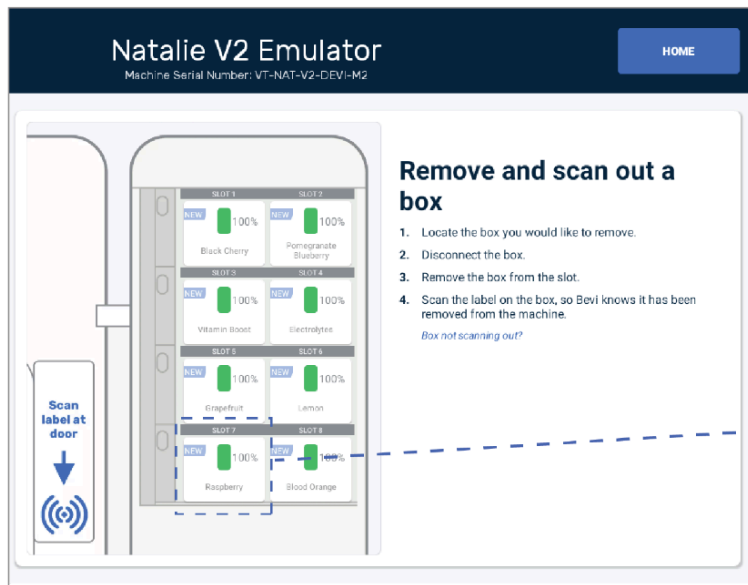


6. Scan in new Box and place in machine

Before placing the new flavor box (BiB) in the machine, scan in the label on the new box by holding it up to the scanning area on the inside of the door. An audio tone will sound when the label is scanned in successfully.

Confirm the box is placed in the correct slot as shown on Service Panel.

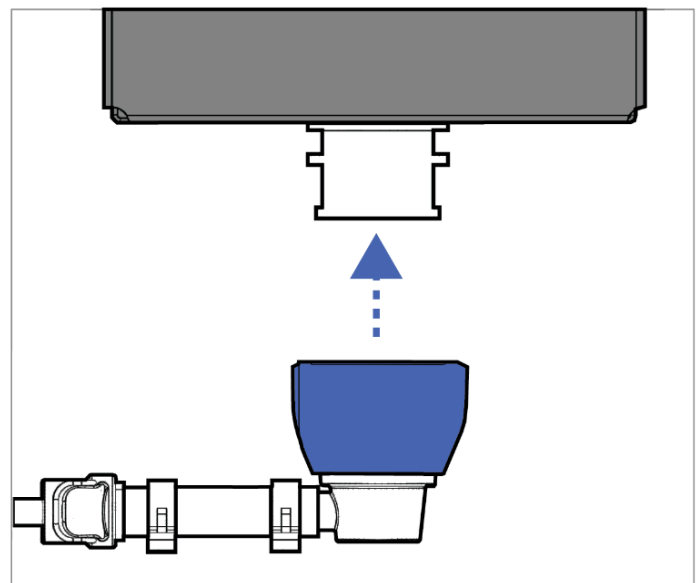
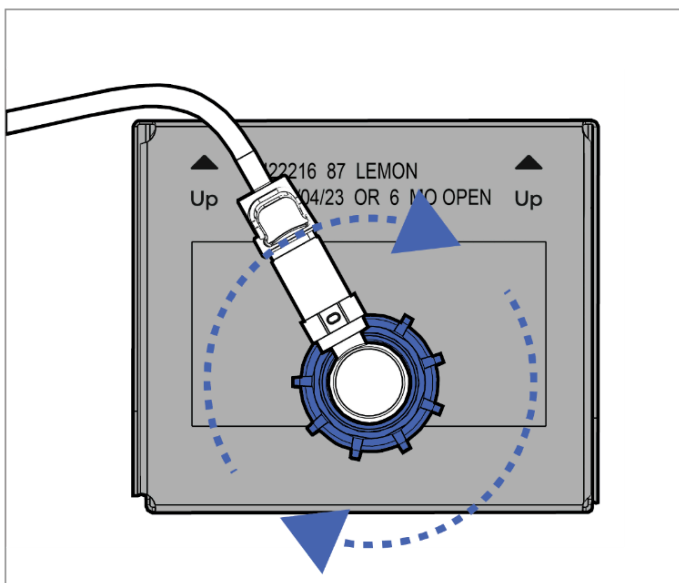
- Important: Ensure the box is placed upright, with arrows facing UP.

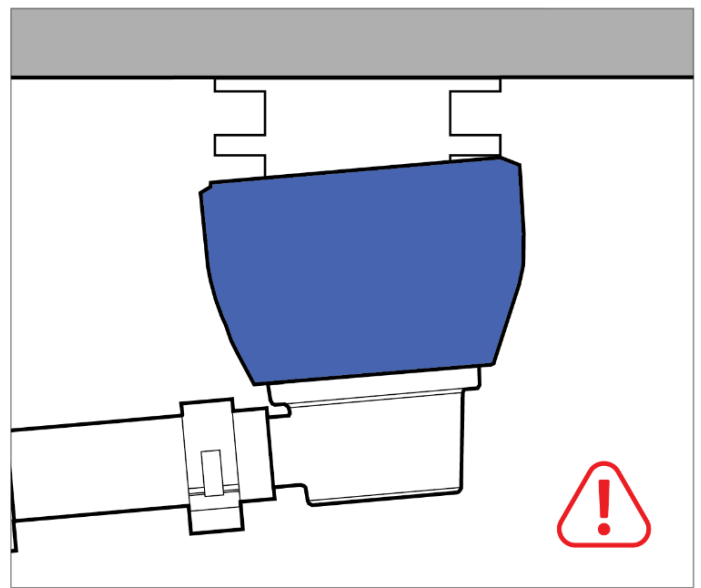
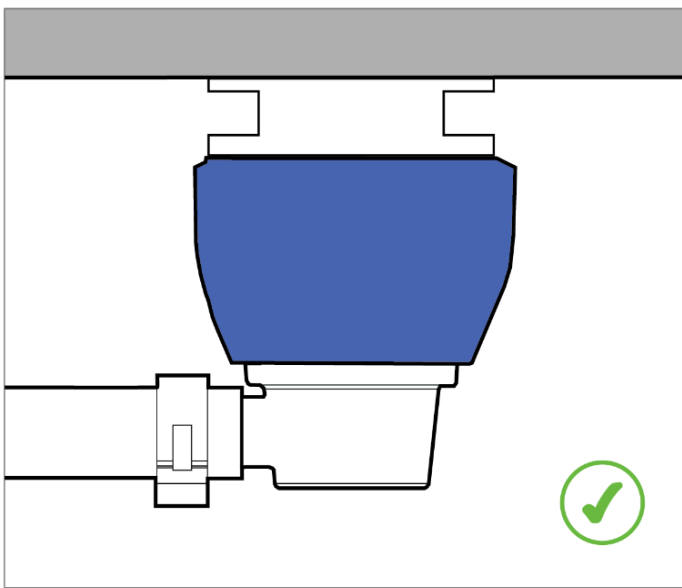


7. Connect the new Box

Re-attach the blue connector to the nozzle.

- Ensure the connector is fully seated and not leaking.
- Improper alignment can inhibit flavor from dispensing properly.





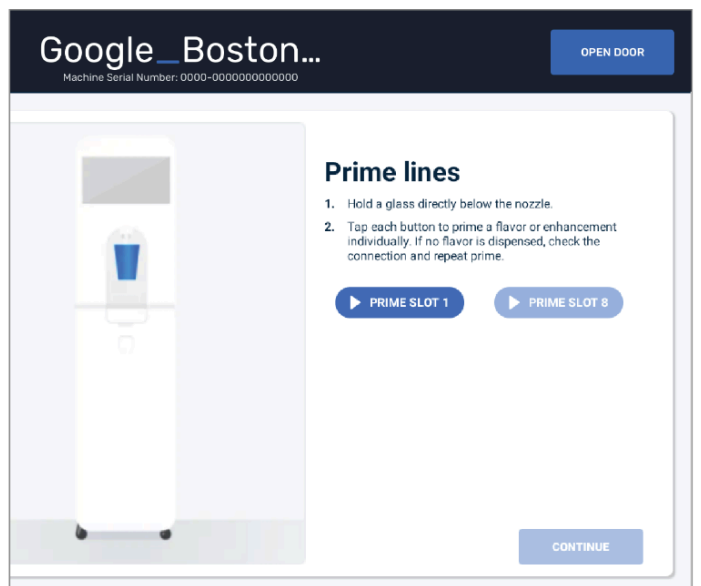
8. Confirm box placement

Then tap Finish Swap & Save.

8. Prime

Hold a cup under the nozzle and tap the Prime button on screen.

- This takes approximately 20 seconds
- Concentrate should dispense from the machine. If it does not, check the connection and repeat prime.



9. Finish service

Tap **Finish Service** to return to the dispense screen.

