

The Standup

# 2.0

Water, elevated



# Why choose Bevi?

Still, sparkling, flavored, and enhanced water just the way you like it—on-demand and without the waste.



## An amenity everyone loves

Water that delivers personalized flavor, well-being, and fun times in every pour.



## Boost wellness

Quality ingredients that keep you hydrated without compromise.



## Cut your costs

Bevi typically costs less than half the cost of canned and bottled water.



## Unbottle the future

Reduce your carbon footprint—every Bevi machine can save 50,000+ bottles and cans per year.



## Smart technology for smart hydration

Keep the fun flowing without interruption with fresh on-screen content, seamless updates, and remote diagnostics.

“Bevi is now in all our kitchens at Lyft HQ. Previously, we stocked other flavored waters, both still and sparkling. Bevi has allowed us to lower overall beverage costs, and reduce our overall carbon footprint.”



Loved by

GREYSTAR

HYATT



NETFLIX

BANK OF AMERICA

# The elevated water experience

Customize your drink your way. With over 48,000 drink combinations to choose from, the options are endless!

## Still or sparkling?

Bump up the bubbles or just stick with the classic. Choose between filtered still, light sparkling, or sparkling for the right amount of fizz.

## We're hot and we're cold

Choose your favorite beverage temperature including cold, ambient, or hot. Use hot water to make tea then come back to pour a cold glass of sparkling.

## Top it off with an enhancement

Add in an enhancement like Caffeine, Electrolytes, or Vitamin Boost. Mix up to 2 enhancements into every beverage.

## What's your flavor?

With over 12 natural flavors to choose from, mix up to 3 different flavors at once to create your own combinations. We're talking Raspberry-Lime-Coconut water if that's what you're into!

## Know what's in your beverage

The Nutrition Counter shows you how many calories and the amount of sugar and caffeine are in your beverage as you dispense.

## See your impact

Head over to the "Explore" tab to see your environmental impact, bottles saved counter, flavor ingredients, and more!



# Flavor it up, drink it down

Choose a classic or build your own unique combinations to create your favorite flavored water.

## Flavors that will make you smile

Choose from over 14 natural flavors made from real fruit essence. Mix up to three different flavors at once, and select the strength of each flavor to create your perfect drink.

Our zero and low-calorie flavors are sodium-free, gluten-free, vegan, and kosher certified.

## Take hydration to the next level with enhancements

Need an extra boost? Add an enhancement! Choose between Caffeine, Electrolytes, or Vitamin Boost. Add up to three enhancements into your beverage.



Caffeine



Electrolytes



Vitamin Boost



Grapefruit



Lemon



Coconut



Key Lime



Watermelon



Black Cherry



Blackberry Lime



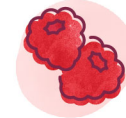
Strawberry Lemongrass



Lime Mint



Peach Mango



Raspberry



Cucumber



Pomegranate Blueberry



Blood Orange

For ultimate choice, we recommend offering 5 flavors and 3 enhancements in the machine.



# The specs

Need some extra detail on our Bevi machines? We've got everything you need to know here.

16.5"

16.5" width plus 1" clearance on each side for ventilation - total of 18.5" clear width

22"

22" deep plus 2" for ventilation on the back - total 24" clear depth

## Touchscreen

Our 15.5" touchscreen enables an intuitive and easy way to select, build, and customize your drink. Look out for fun touchscreen surprises and our energy saver mode at night.

## Refill station

All bottles within 12" height fit easily into the dispenser area. With our single nozzle design and colorful lighting, filling up is clean and easy.



66.25"

66.25" tall plus 3" for ventilation - total 69.25" clear height

## The Well

Let us do the work. Real-time remote monitoring of flavors and CO<sub>2</sub> ensures the bubbles, and the fun, never stop.

## Compact footprint

More features in a smaller machine. With our slimmer 16" width design, it can fit into any space.

## Easy install

All you need is a standard 3 prong US 115v electrical outlet and 1/4" outer diameter water line.

# hydrate happy™

