

The Standup 2.0



Why choose Bevi?

Still, sparkling, flavored, and enhanced water just the way you like it on-demand and without waste.



An amenity everyone loves

Water that delivers personalized flavor, well-being, and fun times in every pour.



Boost wellness

Quality ingredients that keep you hydrated without compromise.



Cut your costs

Bevi typically costs less than half the cost of canned and bottled water.



Unbottle the future

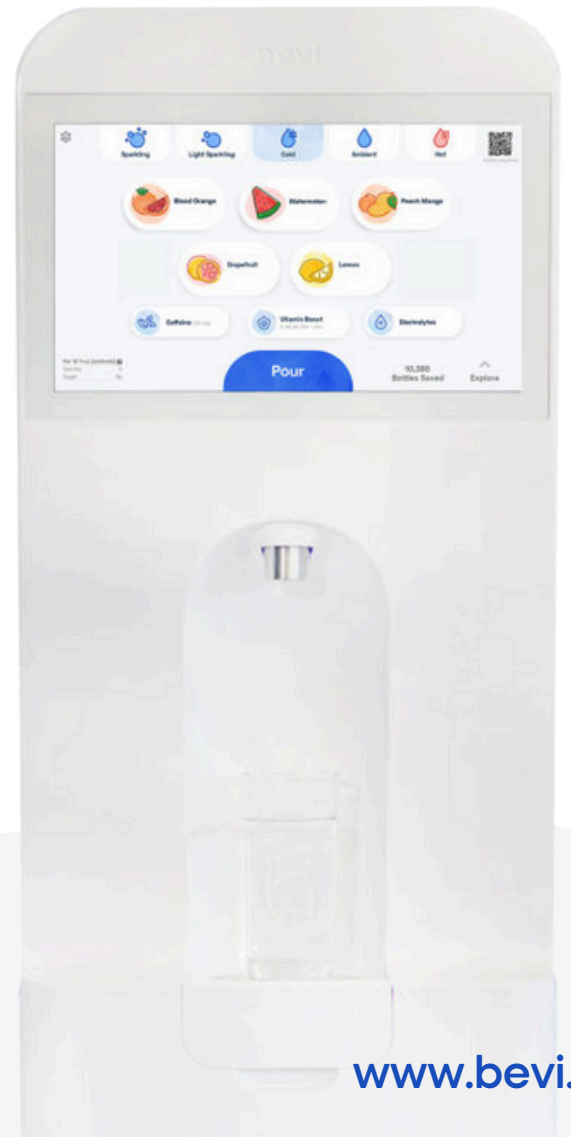
Reduce your carbon footprint—every Bevi machine can save thousands and thousands of bottles and cans per year.



Smart technology for smart hydration

Keep the fun flowing without interruption with fresh on-screen content, seamless updates, and remote diagnostics.

“Bevi is now in all our kitchens at Lyft HQ. Previously, we stocked other flavored waters, both still and sparkling. Bevi has allowed us to lower overall beverage costs, and reduce our overall carbon footprint.”



Loved by

GREYSTAR™



HYATT®

NETFLIX

www.bevi.co

The elevated water experience

Customize your drink your way. With over 48,000 drink combinations to choose from, the options are endless!

Still or sparkling?

Bump up the bubbles or just stick with the classic. Choose between filtered still, light sparkling, or sparkling for the right amount of fizz.

We're hot and we're cold

Choose your favorite beverage temperature including cold, ambient, or hot. Use hot water to make tea then come back to pour a cold glass of sparkling.

What's your flavor?

With over 14 natural flavors to choose from, mix up to 3 different flavors at once to create your own combinations. We're talking Raspberry-Lime-Coconut water if that's what you're into!

Top it off with an enhancement

Add in an enhancement like Energy Boost, Electrolytes, Vitamin Boost, or Focus Blend*. Mix up to 2 enhancements into every beverage.

See your impact

Head over to the "Explore" tab to see your environmental impact, bottles saved counter, flavor ingredients, and more!

Know what's in your beverage

The Nutrition Counter shows you how many calories and the amounts of sugar and caffeine that are in your beverage as you dispense.



Flavor it up, drink it down

Choose a classic or build your own unique combinations to create your favorite flavored water.

Flavors that will make you smile

Choose from over a dozen delicious beverage options made with natural flavors. Mix up to 3 different flavors at once, and select the strength of each flavor to create your perfect drink. Our zero and low-calorie flavors are, gluten-free, vegan, and kosher certified.

Take hydration to the next level with enhancements

Need an extra boost? Add an enhancement! Choose between Energy Boost, Electrolytes, Vitamin Boost, or Focus Blend*. Add up to three enhancements into your beverage.



For ultimate choice, we recommend offering 5 flavors and 3 enhancements in the machine.

Enhancements



Energy Boost



Electrolytes



Vitamin Boost



Focus Blend*

Unsweetened Flavors



Grapefruit



Lemon



Coconut



Key Lime



Watermelon



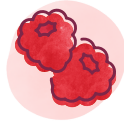
Strawberry Lemongrass



Lime Mint



Peach Mango



Raspberry



Blood Orange



Cucumber



Pomegranate Blueberry

Sweetened Flavors



Black Cherry



Blackberry Lime

*Currently only available in the US.

www.bevi.co

The Specs

Need some extra detail on our Bevi machines? We've got everything you need to know here.

16.5"

16.5" width plus 1" of clearance on each side for ventilation - total of 18.5" clear width

22"

22" deep plus 2" for ventilation on the back - total 24" clear depth

Touchscreen

Our 15.5" touchscreen enables an intuitive and easy way to select, build, and customize your drink. Look out for fun touchscreen surprises and our energy saver mode at night.

Refill Station

All bottles within 12" height fit easily into the dispenser area. With our single nozzle design and colorful lighting, filling up is clean and easy.

66.25"

66.25" tall plus 3" for ventilation - total 69.25" clear height

The Well

Let us do the work. Real-time remote monitoring of flavors and CO₂ ensures the bubbles, and the fun, never stop.

Compact Footprint

More features in a smaller machine. With our slimmer 16" width design, it can fit into any space.

Easy Install

All you need is a standard 3 prong US 115v electrical outlet and 1/4" outer diameter water line.



