

[Guide] LED Light Replacement

Overview

This document is intended for Bevi technicians and other qualified personnel to provide step by step instructions on how to change LED lights in the Bevi machine. Instructions for both Standup (SU) and Countertop (CT) Model Bevi units are included.

Frequently Asked Questions

Q: What causes the LED ring/strip to burn out?

A: *The LED rings are subject to water ingress, leading to a short circuit and damage to the LED circuit board.*

Q: Can you change the colored lights on the LED ring?

A: *If you would like to change the colored lights on the LED ring to white, please contact support@bevi.co with the company name and machine ID of the Bevi you would like changed.*

Questions Answered in this Document

Q: [What parts are required to change the LED assembly in a Bevi unit?](#)

Q: [How do I turn off power to the Bevi unit?](#)

Q: [How do I remove the LED assembly?](#)

Required Tools & Materials

- Philips screwdriver #1 (for CT units only)
- Duct tape (if necessary)
- Double sided tape (if necessary)
- Power splitter (just in case for v.75 Standup)

- v.75 LED Ring (2-prong) Part #727-1031



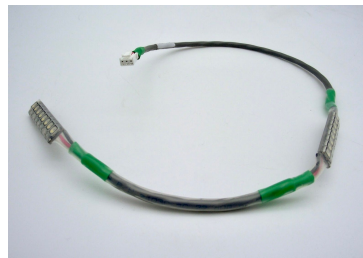
- v1.0 LED Ring (3-prong) Part #727-1023



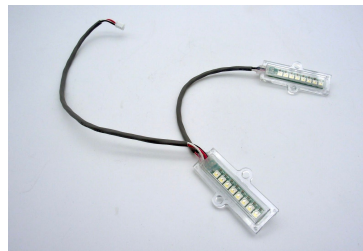
- v1.5 LED Ring Part #102266-0 1



- v0 CT LED Strip Part #510-0046



- v1 CT LED Strip Part #540-0032



Task 1: Turning off the power to the Bevi Machine

1. For all SU units, the switch is located on the back just above the power cord.
2. For v0 CT units, turn off the power strip.
3. For v1 CT units, turn off the switch located on the back right hand side of the head unit.

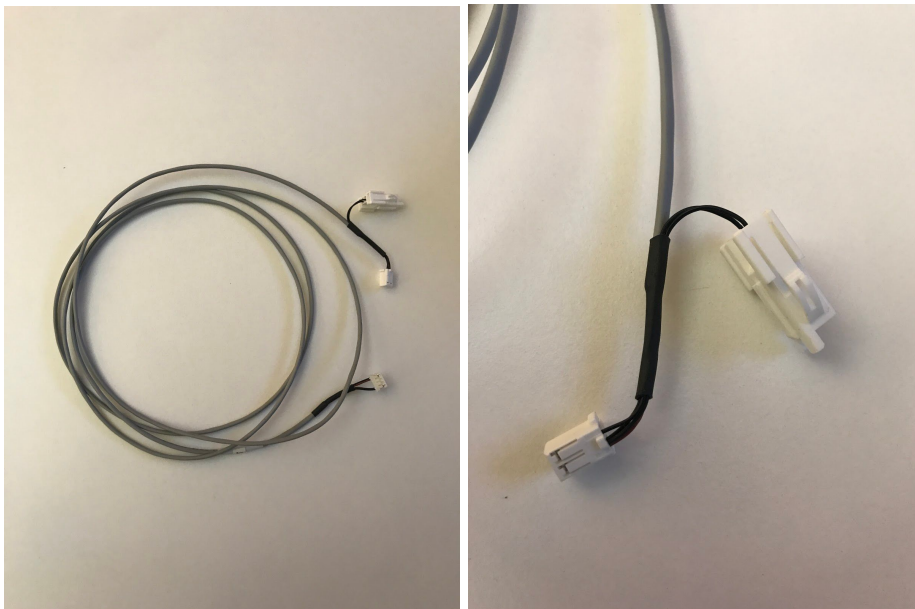
Task 2: Removing the LED ring/strip

NOTE: v.75 Standup will only have a LED ring if nozzle has been retrofitted with a v.75 nozzle retrofit kit. Part # 720-0008.

NOTE: Before moving forward, open the v.75 or v1 standup machine and identify the LED ring so you know how to proceed.

v.75 SU LED ring (2-prong)

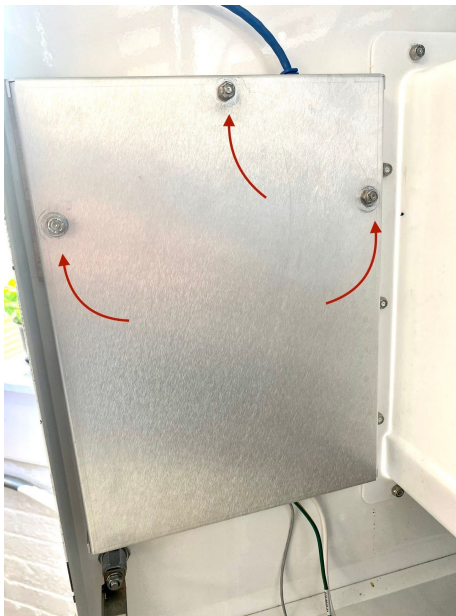
1. Follow the electrical wire until you get to the power splitter and carefully remove from the power splitter.



2. Clean the surface and take off the double sided tape covers on the new LED ring (use your own double sided tape if the LED ring doesn't stick properly).
3. Connect the new LED ring to the power splitter.

v1 SU LED ring (3-prong)

1. Remove the electrical box cover.



2. Disconnect the LED ring from the control board.
3. Take off double sided tape covers on the new LED ring (use your double sided tape if the LED ring does not stick properly).
4. Connect the new LED ring to the control board.
5. Put the electrical box cover back on.

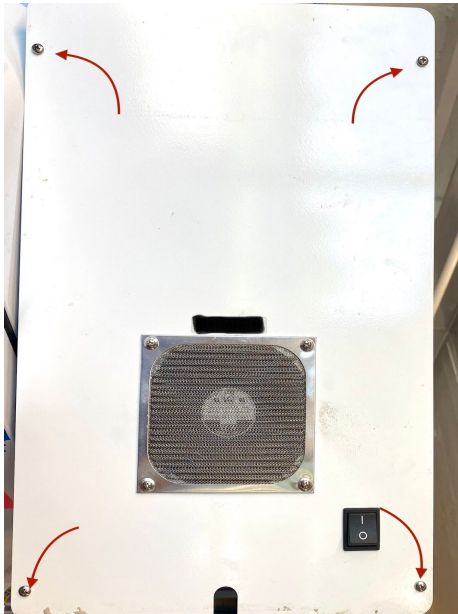
v1.5 SU Dispense Assembly Replacement

NOTE: When an LED light requires replacement in a v1.5 SU Bevi machine, the technician is advised to replace the entire dispense assembly and return it under RMA.

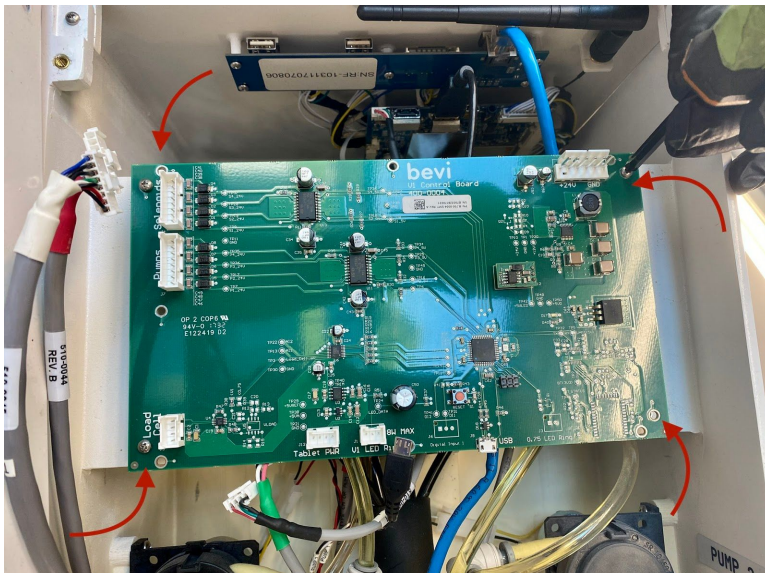
[Click here to go to the Bevi Dispense Assembly Replacement Guide.](#)

v0 CT

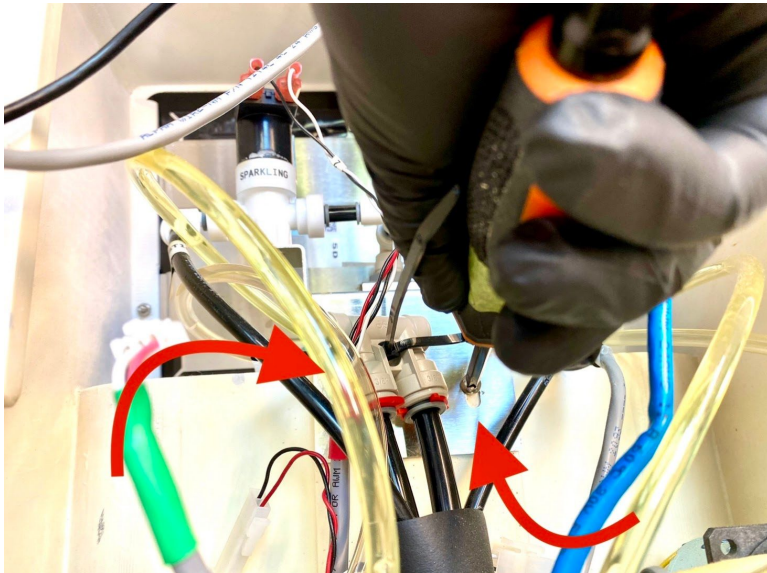
1. Unscrew the 4 screws on the back panel of the head unit.



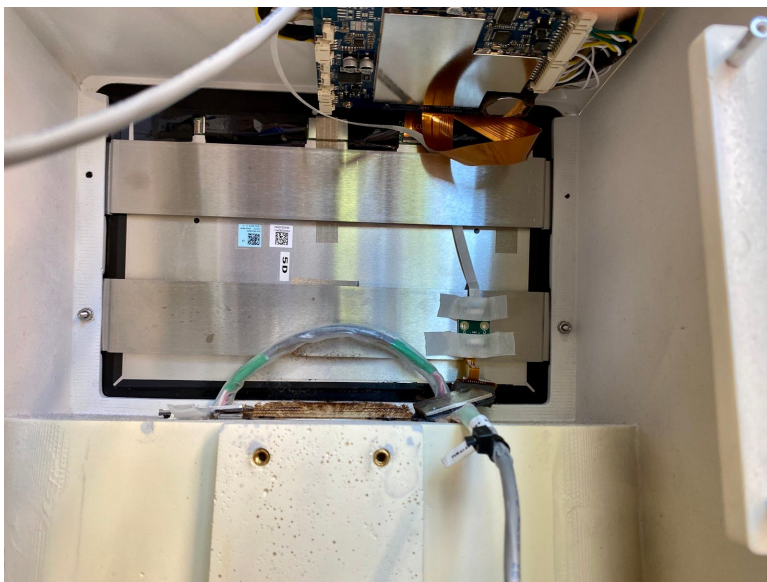
2. Carefully remove the back panel because it is connected to the control board on a short wire.
3. Disconnect and remove all connections on the control board.



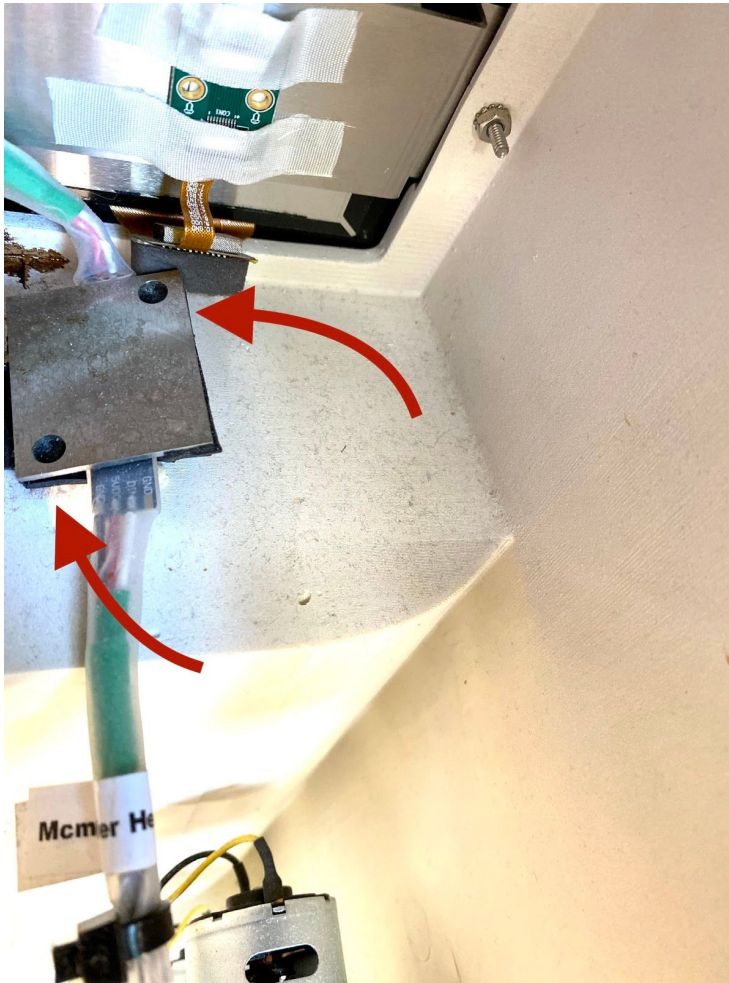
4. Remove the control board.
5. Unscrew (2) screws holding bracket in place.



6. Carefully remove the bracket holding the nozzle and solenoids



7. Remove screws holding LED lights in place.



8. Remove LED lights (clean LED light area if needed).
9. Replace LED lights.
10. Perform steps 1 - 7 in reverse.
11. Power the unit back on to verify new LEDs are functioning.

v1 CT

1. Unscrew the top (2) screws on the back panel of the head unit.



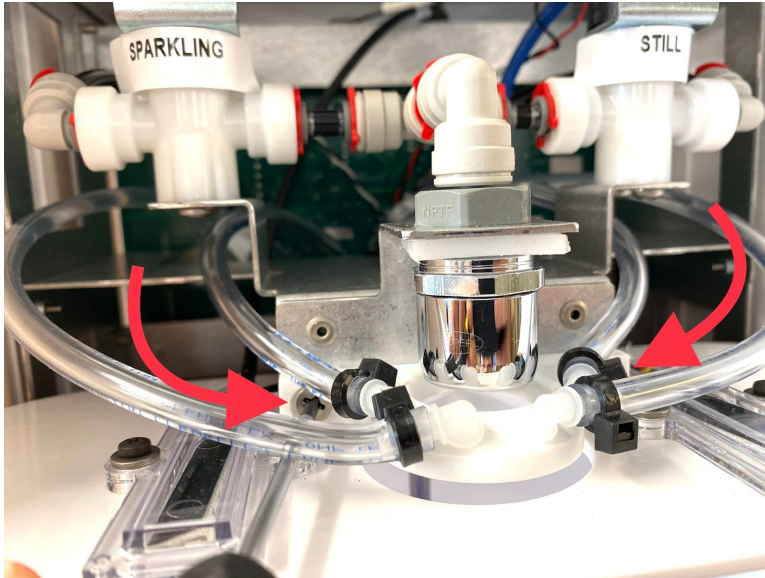
2. Unscrew the (2) screws underneath the front of the head unit.



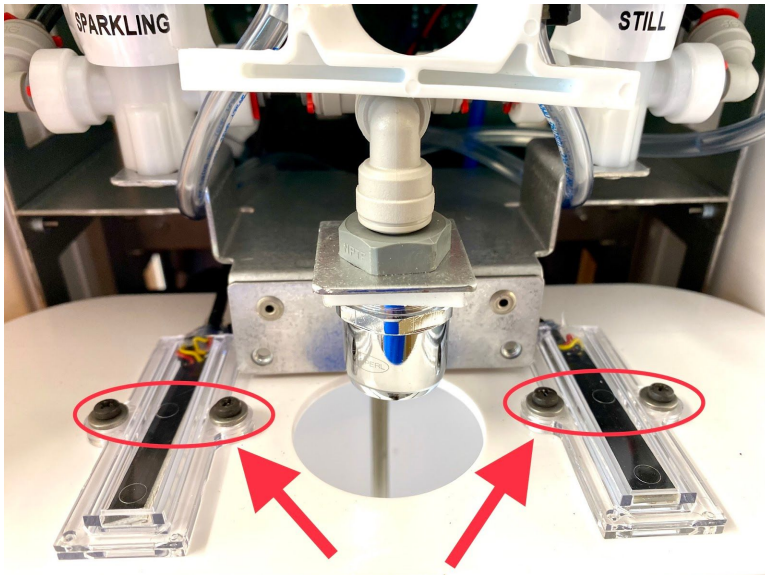
3. Carefully remove the top part of the CT head unit and disconnect the (3) electrical connections (usb, ethernet cable, power)



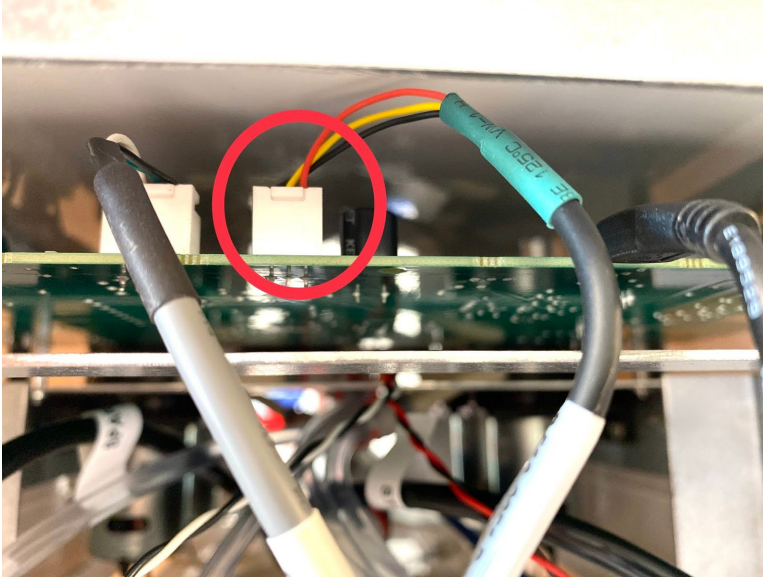
4. Remove the flavor ring if it makes maneuvering easier (Optional).



5. Remove screws holding LED lights in place.



6. Follow LED light connections and disconnect from control board



7. Remove LED lights.
8. Replace LED lights with the new part.
9. Perform steps 1 - 6 in reverse.
10. Power the unit back on to verify new LEDs are functioning.