

# [Guide] Flavor Pump Replacement

## Overview

This document is intended for Bevi technicians and other qualified personnel to provide step by step instructions on how to change flavor pumps on the Bevi machine. Instructions for both Stand Up (SU) and Countertop (CT) Model Bevi units are included.

## Frequently Asked Questions

Q: What symptoms are commonly shown before replacing a flavor pump?

A: *Flavor pump is making a weird sound like it's working "too hard" or flavor isn't dispensing from the nozzle correctly.*

Q: I replaced the bib connector line leading to the pump, but flavor still isn't being dispensed, what do I do now?

A: *Check the tubing inside the pump. It's possible that the line is gummed up and you need to replace it.*

## Questions Answered in This Document

Q: [How do I turn off power to the Bevi unit?](#)

Q: [How do I remove a flavor pump in a standup Bevi unit?](#)

Q: [How do I remove a flavor pump in a countertop Bevi unit?](#)

## Technicians Required Tool

- ¼" tubing (if necessary)
- Tube cutter (if necessary)
- Philips screwdriver
- Multitool (if available)

## Task 1: Setting up

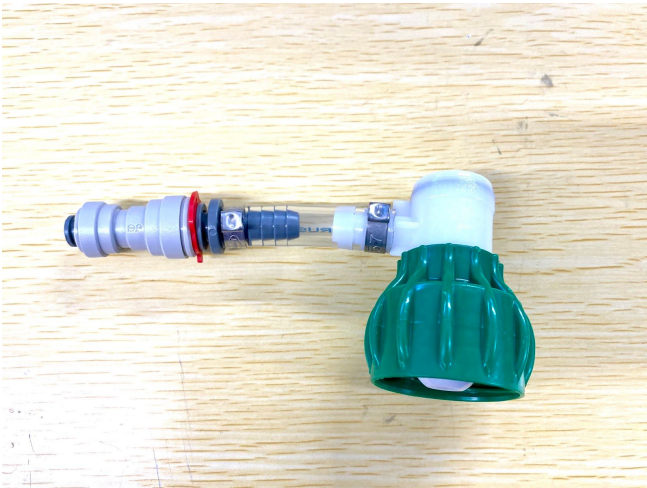
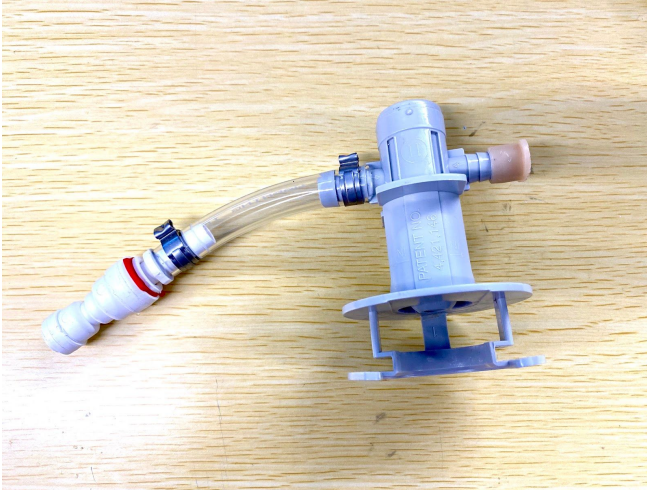
1. Turn off the Bevi Machine
  - a. For all SU units, the switch is located on the back just above the power cord.



- b. For v0 CT units, you will need to locate the power brick and disconnect power from there.
  - c. For v1 CT units, you will need to locate the power switch at the back of the head unit.



2. Disconnect flavor bib connectors (QDC or twist on) from bibs.

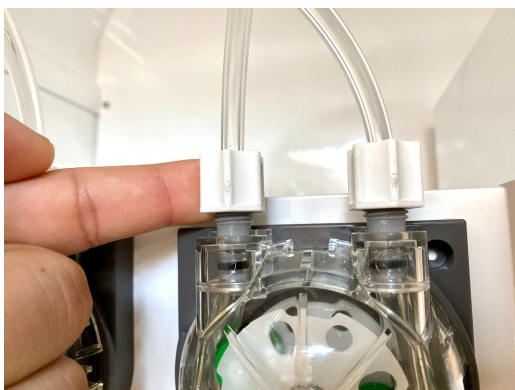


**NOTE: Be prepared to clean up a little bit of flavor spillage when disconnecting the bibs, especially with the twist on connectors**

## Task 2: Removing the flavor pump

### Standup

1. Gently unclip electrical leads on the back of the pump.



2. Twist off tubing connectors on the pump.
3. Remove pump from Bevi.
4. Replace with a new pump.
5. Reconnect electrical leads.

6. Reconnect twist on tubing connectors on the pump.
7. Reconnect flavor bibs.
8. Turn Bevi machine back on
9. Access service panel and “prime” flavor pump # that you replaced

**NOTE: For v.75/v1, flavor pumps are located behind the co2 tank. For v1.5, flavor pumps are located behind the flavor bibs.**

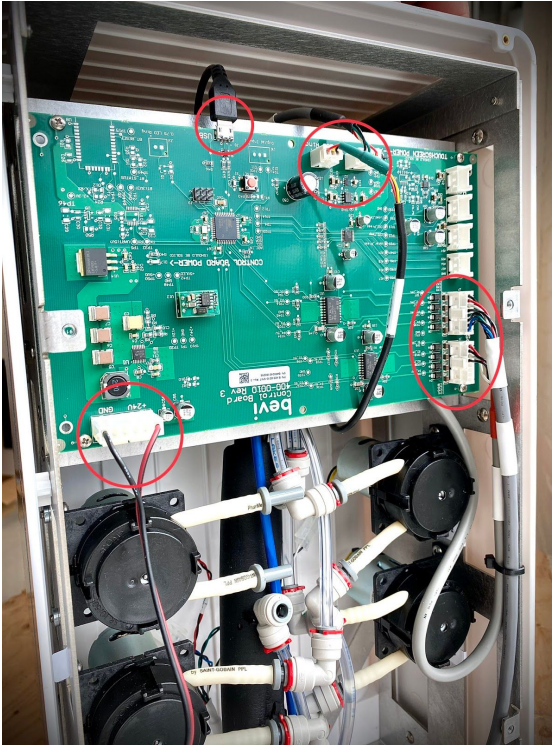
## Countertop

1. Unscrew the screws on the back panel of the head unit.

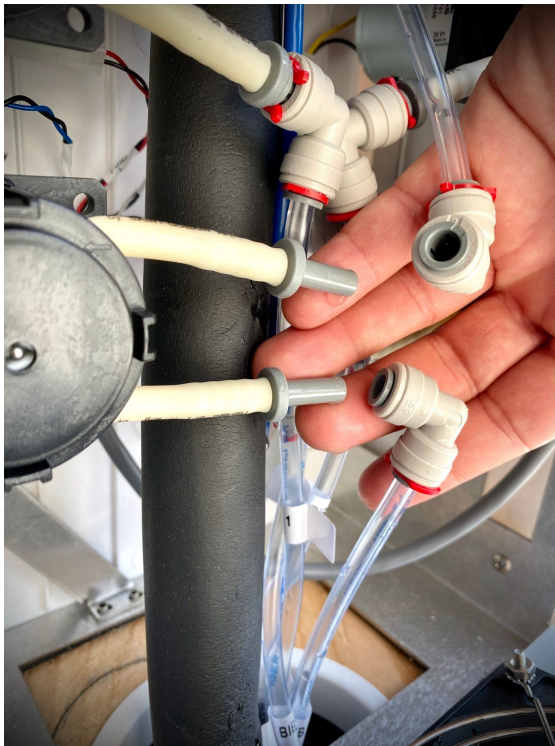




2. Disconnect and remove all connections on the control board.



3. Disconnect push to connect tubing.



4. Unscrew the shell from the frame (4 screws on each side)



5. Unscrew the touchscreen using the two screws underneath.



6. Disconnect connections from the touchscreen.



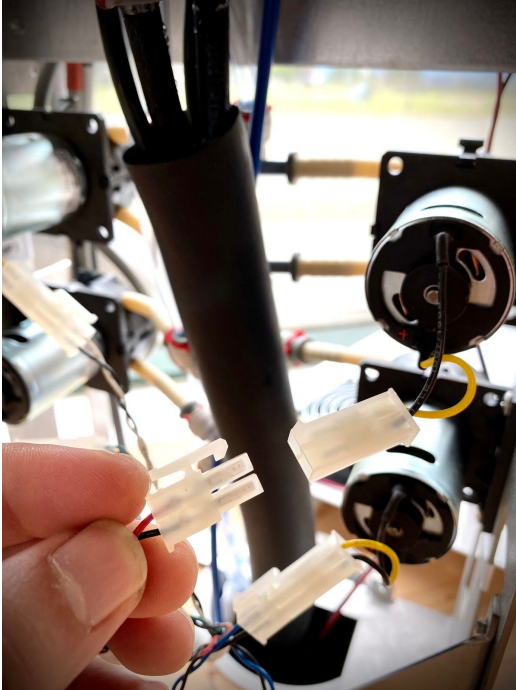
Carefully remove and place the touchscreen in a safe spot.

7. Separate the shell from the frame slowly

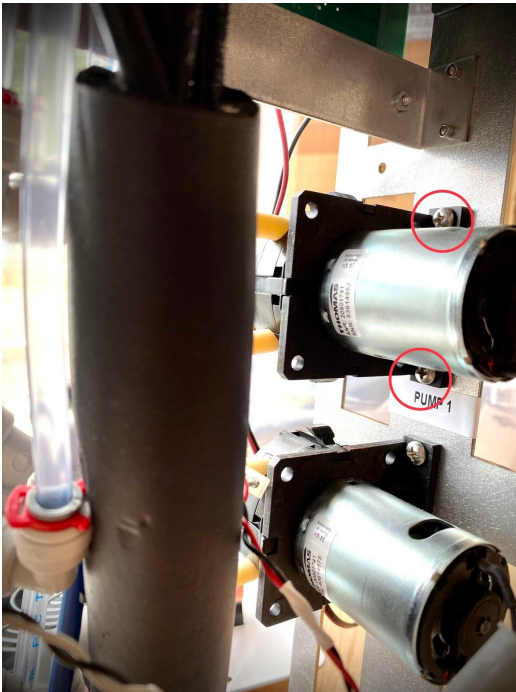




8. Gently unclip electrical leads on the back of the pump.



9. Take out the screws holding the pump in place



10. Replace with a new pump.
11. Follow steps 1-9 in reverse to reassemble



Rev. 1.0  
06/12/20

12. Turn the Bevi back on, access the service panel and “prime” the flavor pump # that you replaced.