

[Guide] CO2 Pressure Transducer Replacement

Overview

This document is intended to provide step-by-step instructions for field technicians when replacing the CO2 Pressure Transducer in a V1.5 Standup (SU) Bevi unit.

Frequently Asked Questions

Q: What does the CO2 Pressure Transducer do?

A: *The CO2 Pressure Transducer controls the pressure of the CO2 gas to a desired value*

How do I know when the CO2 Pressure Transducer needs to be replaced?

A: *The CO2 runs out faster than expected.*

Q: How long does this replacement procedure take?

A: *The procedure takes approximately 15 minutes.*

Questions Answered in this Document

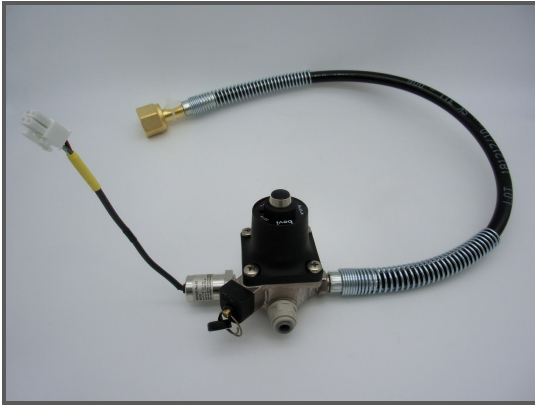
Q: [How do I turn off power to the unit?](#)

Q: [How do I remove the CO2 tank?](#)

Q: [How do I remove the CO2 pressure transducer?](#)

Required Tools & Materials

- Phillips Screwdriver Size #2
- Adjustable Crescent Wrench
- CO2 Regulator, 1/4", 120 PSI w/ Transducer: Part Number: 103619-01



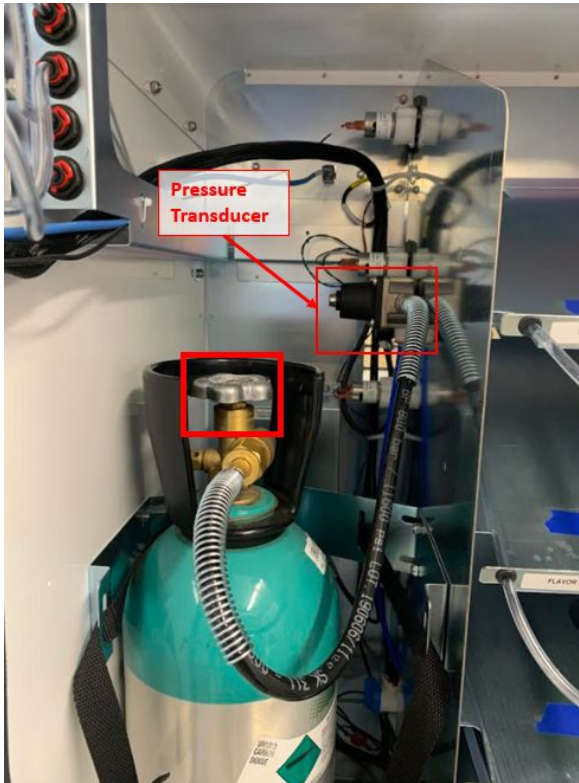
Task 1: Turn Off Power to the Unit

1. Turn off power to the unit by flipping the switch on the back near where the power cord comes out.



Task 2: Remove CO2 Tank

2. Turn off the CO2 tank in the unit by rotating the valve handle on the top of the tank and turn it clockwise until it stops.



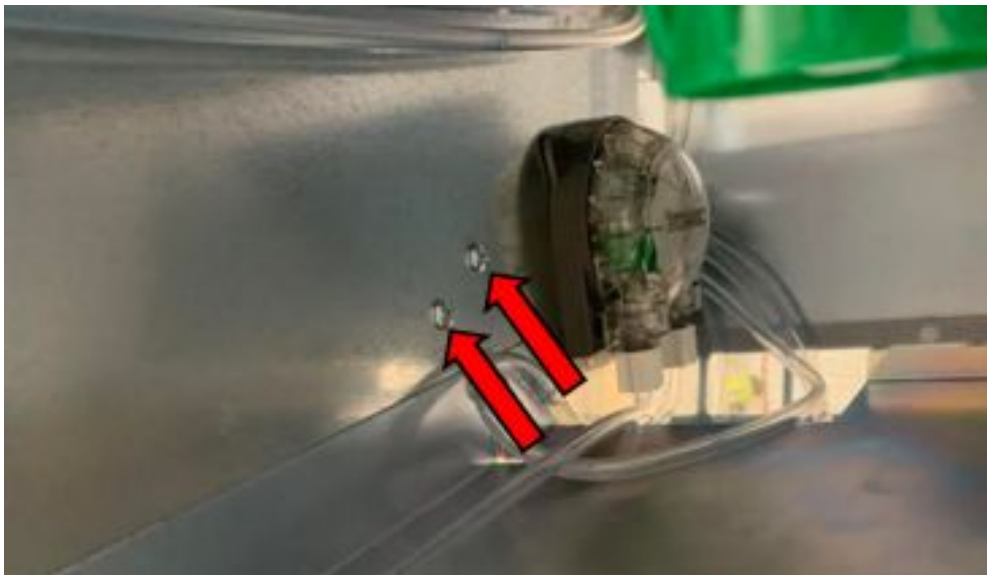
3. Disconnect the black CO2 high pressure hose from the CO2 tank using an adjustable wrench.



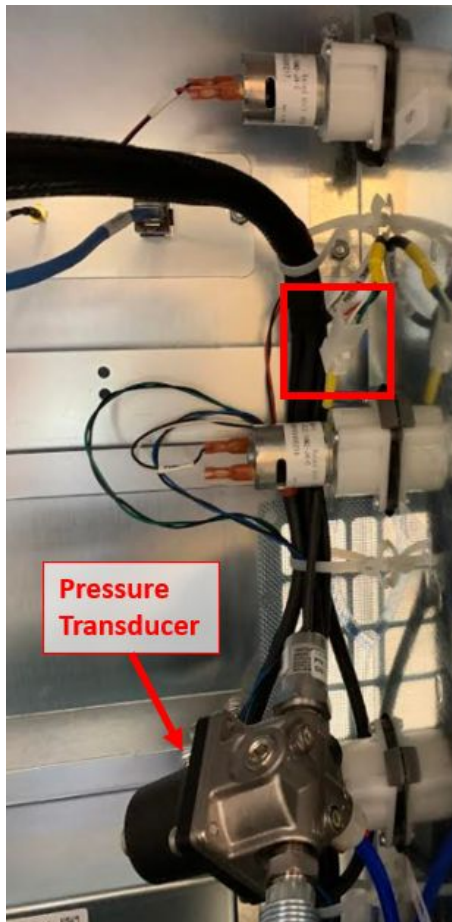
4. Unclip the retaining strap and remove the CO2 tank from the unit.

Task 3: Remove CO2 Pressure Transducer

5. Remove the (2) screws that secure the pressure transducer to the partition behind the #2 flavor bib using a #2 Phillips screwdriver.



6. Disconnect the white 4 pin connector attached to the pressure sensor cable.





7. Detach the blue CO2 tube from the pressure transducer.

Task 4: Replacement of the CO2 Pressure Transducer

1. Perform steps 1-7 in reverse order to reinstall the CO2 pressure transducer.
2. Verify functionality after turning the unit back on to ensure that the sparkling water is dispensing as expected.