



Premium beverages for the modern dining hall

In all-you-care-to-eat dining locations, lease our Smart Water Cooler® for free—just pay for consumables as needed. Serve filtered still and sparkling water with healthy, naturally flavored zero- and low-calorie options, plus functional enhancements all from one sleek machine.



Healthy variety

Bevi offers premium filtered still and sparkling water with a variety of naturally flavored, zero- and low-calorie options, plus functional enhancements like Electrolytes and Focus Blend.



Track and optimize

Utilize our reporting features to monitor popular flavors, usage, and sustainability metrics.



High capacity

Bevi machines are designed to serve up to 1,000 cold drinks per day – even during the lunch rush.



The right match

Choose from a wide selection of flavors and enhancements to ensure Bevi complements other beverage options on-site.



Nationwide coverage, local support

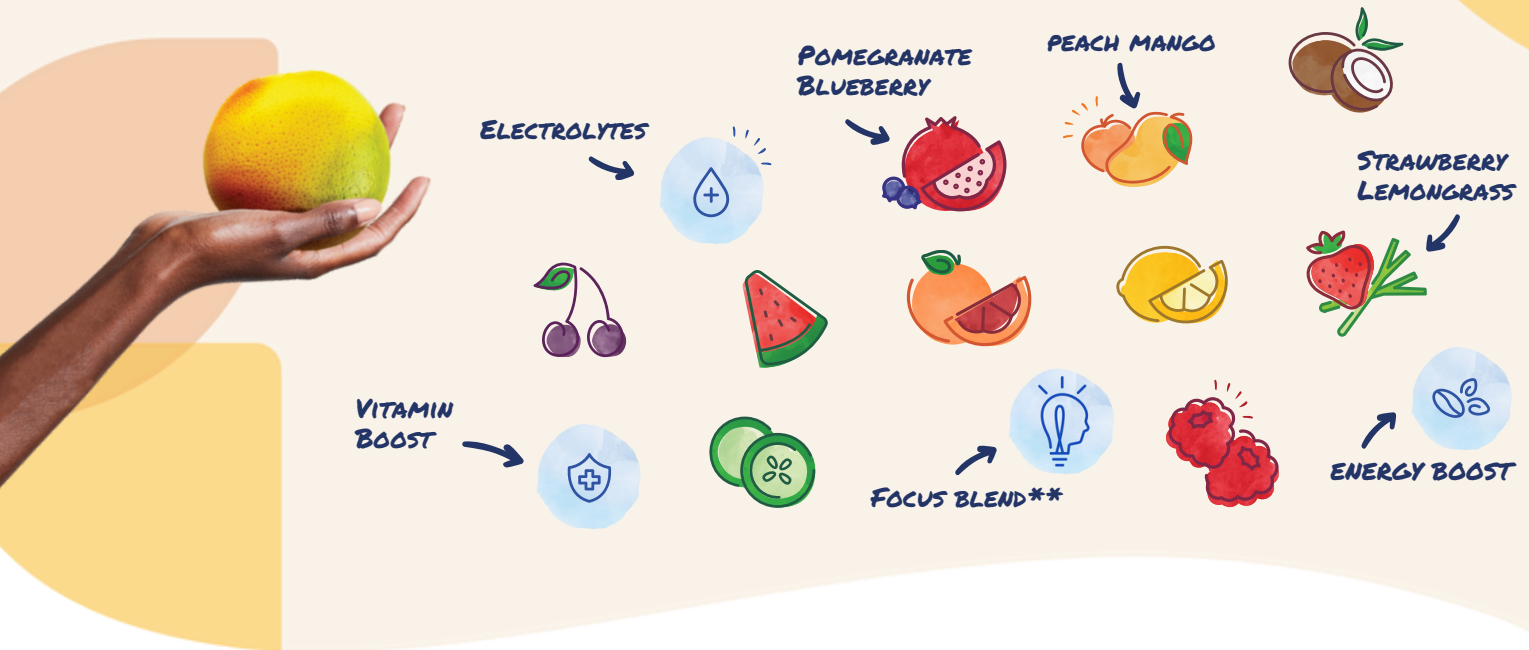
Bevi is available to install machines, perform preventative maintenance, and handle repairs in all 50 states and Canada.



Retail dining location? Pay a flat monthly machine lease in addition to as-needed consumables and serve thousands of cold, filtered water beverages daily.

All-day hydration, endless combos

An array of flavors sure to make everyone smile. Choose a classic or mix flavors together for something all your own. Need a boost? Choose an enhancement like Vitamin Boost, Energy Boost, Electrolytes, or Focus Blend.



Loved by schools and universities including:



“Bevi was a no-brainer for us. Students love the flavors and enhancements, and Bevi supports everything we’re trying to do here – quality, wellness, and value.

Frank Budig
Dining Services General Manager
Sodexo

WATCH BEVI IN ACTION →



WWW.BEVI.CO
@GETBEVI

Get your quote now! Call your sales representative or send us a note at sales@bevi.co

**Currently only available in the US.

Updated 10/29/2025