

The Standup 2.0



The Standup 2.0 Features and Functions

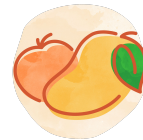
Still, sparkling, and flavored water on demand—without the waste.

- **Water temperature options**
 - Choose your favorite beverage temperature including cold, ambient, or hot.
- **Still and sparkling options**
 - Choose between filtered still, light sparkling, or sparkling water for the right amount of fizz.
- **Flavor mixing**
 - With over 12 natural flavors to choose from, mix up to 3 different flavors at once to create your own combinations. We're talking Raspberry-Lime-Coconut water if that's what you're into!
- **Enhancements**
 - Add in an enhancement like caffeine, electrolytes, or immunity. Mix up to 2 enhancements into every beverage.
- **Touchless Dispensing**
 - Control your bottleless water dispenser from your phone—no app or configuration required.
- **See your impact**
 - Use the "Explore" tab to see your environmental impact, bottles saved counter, beverage ingredients, and more!

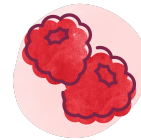
Flavors

Choose a classic or build your own unique combinations to create your favorite flavored water.

- Choose from over 12 natural flavors made from real fruit essence—none of that fake stuff, ever! Mix up to 3 different flavors at once to create your perfect drink.
- Our zero and low-calorie flavors are non-GMO, gluten-free, vegan, and kosher certified.
- For optimal beverage building, we recommend a combination of 5 flavors and 3 enhancements per machine.



Peach Mango



Raspberry



Strawberry
Lemongrass



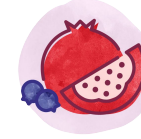
Blackberry Lime



Key Lime



Black Cherry



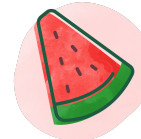
Pomegranate Blueberry



Cucumber



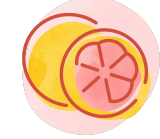
Lime Mint



Watermelon



Coconut



Grapefruit



Lemon



Enhancements

Take hydration to the next level with enhancements

- **Need an extra boost? Add an enhancement! Choose between caffeine, electrolytes, or immunity.**
 - **Immunity:** Contains Vitamin C (50% DV), Zinc (35% DV) Gluconate, Echinacea Purpurea, Ginger Root Extract, and Elderberry Extract.
 - **Electrolytes:** Contains Magnesium, Calcium, and Potassium.
 - **Caffeine:** Caffeine is dispensed at 2 levels—high 95mg low 45mg.
 - Note: All percentages and levels above are based on a 12-oz beverage
- **Add up to 2 enhancements into your beverage.**



Electrolytes



Immunity



Caffeine

The elevated water experience

Customize your drink your way. With over 48,000 drink combinations to choose from, the options are endless!

Still or sparkling?

Bump up the bubbles or just stick with the classic. Choose between filtered still, light sparkling, or sparkling for the right amount of fizz.

We're hot and we're cold

Choose your favorite beverage temperature including cold, ambient, or hot. Use hot water to make tea then come back to pour a cold glass of sparkling.

Top it off with an enhancement

Add in an enhancement like caffeine, electrolytes, or immunity. Mix up to 2 enhancements into every beverage.

Know whats in your beverage

The Nutrition Counter shows you how many calories and the amount of sugar and caffeine are in your beverage as you dispense.

What's your flavor?

With over 12 natural flavors to choose from, mix up to 3 different flavors at once to create your own combinations. We're talking Raspberry-Lime-Coconut water if that's what you're into!

See your impact

Head over to the "Explore" tab to see your environmental impact, bottles saved counter, flavor ingredients, and more!



The specs (sizing, dimensions etc.)

Need some extra detail on The Standup 2.0? We've got everything you need to know here.

Touchscreen

Our 15.5" touchscreen
Enables an intuitive and easy way to select, build, and customize your drink. Look out for fun touchscreen surprises and our energy saver mode at night

Refill station

All bottles within 12" height fit easily into the dispenser area. With our single nozzle design and colorful lighting, filling up is clean and easy.

Compact footprint

Height is 66", Width is 16", and Depth is 21 ¼". With our slimmer 16" width design, it can fit into any kitchen.



Touchless Dispensing

Control your bottleless water dispenser from your phone—no app or configuration required. It's like magic.

The Well



Real-time remote monitoring of flavors and CO₂ ensures the bubbles, and the fun, never stop. The Standup 2.0 is equipped with ethernet, Wi-Fi, and cellular integrated connectivity.

Easy install

All you need is a standard 3 prong US 115v electrical outlet and 1/4" outer diameter water line.